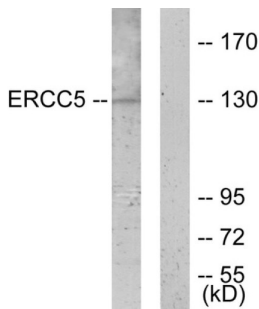


DNA Repair Protein Complementing XP-G Cells (ERCC5) Antibody

Catalogue No.: abx013453



Western blot analysis of extracts from K562 cells, using ERCC5 antibody.

Rabbit polyclonal antibody against ERCC5 protein. Immunogen region is N-terminal.

Target:	DNA Repair Protein Complementing XP-G Cells (ERCC5)
Clonality:	Polyclonal
Reactivity:	Human
Tested Applications:	ELISA, WB
Host:	Rabbit
Recommended dilutions:	WB: 1/500 - 1/3000, ELISA: 1/5000. Optimal dilutions/concentrations should be determined by the end user.
Conjugation:	Unconjugated
Immunogen:	The antiserum was produced against synthesized peptide derived from N-terminal of human ERCC5.
Isotype:	IgG
Form:	Liquid
Purification:	Purified from rabbit antiserum by affinity chromatography using epitope-specific immunogen.
Storage:	Aliquot and store at -20°C. Avoid repeated freeze/thaw cycles.
UniProt Primary AC:	P28715 (UniProt , ExpASY)
KEGG:	hsa:2073
String:	9606.ENSP00000347978

Datasheet

Version: 2.0.0

Revision date: 03 Dec 2024



- Buffer:** PBS (without Mg^{2+} and Ca^{2+}), pH 7.4, 150 mM NaCl, 0.02% sodium azide, 50% glycerol.
- Concentration:** 1 mg/ml
- Note:** This product is for research use only.

For Reference Only