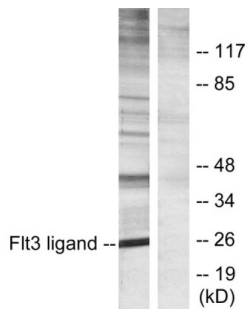


## Flt3 ligand Antibody

Catalogue No.: abx013506



Western blot analysis of extracts from Jurkat cells, using Flt3 ligand antibody.

Rabbit polyclonal antibody against Flt3 ligand protein. Immunogen region is C-terminal.

|                               |  |
|-------------------------------|--|
| <b>Target:</b>                | Flt3 ligand  |
| <b>Clonality:</b>             | Polyclonal   |
| <b>Reactivity:</b>            | Human  |
| <b>Tested Applications:</b>   | ELISA, WB  |
| <b>Host:</b>                  | Rabbit   |
| <b>Recommended dilutions:</b> | WB: 1/500 - 1/3000, ELISA: 1/20000. Optimal dilutions/concentrations should be determined by the end user.   |
| <b>Conjugation:</b>           | Unconjugated   |
| <b>Immunogen:</b>             | The antiserum was produced against synthesized peptide derived from C-terminal of human Flt3 ligand.         |
| <b>Isotype:</b>               | IgG  |
| <b>Form:</b>                  | Liquid   |
| <b>Purification:</b>          | Purified from rabbit antiserum by affinity chromatography using epitope-specific immunogen.                  |
| <b>Storage:</b>               | Aliquot and store at -20°C. Avoid repeated freeze/thaw cycles.   |
| <b>UniProt Primary AC:</b>    | P49771 ( <a href="#">UniProt</a> , <a href="#">ExpASY</a> )  |
| <b>Buffer:</b>                | PBS (without Mg <sup>2+</sup> and Ca <sup>2+</sup> ), pH 7.4, 150 mM NaCl, 0.02% sodium azide, 50% glycerol. |
| <b>Concentration:</b>         | 1 mg/ml  |

# Datasheet

Version: 2.0.0

Revision date: 01 Sep 2024



**Note:** This product is for research use only.

For Reference Only