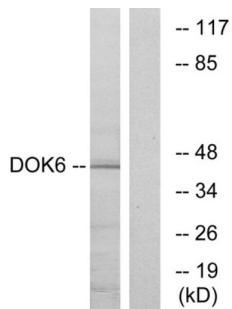
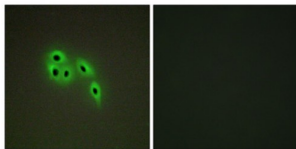


Docking Protein 6 (DOK6) Antibody

Catalogue No.: abx013664



Western blot analysis of extracts from COLO cells, using DOK6 antibody.



Immunofluorescence analysis of A549 cells, using DOK6 antibody.

Rabbit polyclonal antibody against DOK6 protein. Immunogen region is Internal.

Target:	Docking Protein 6 (DOK6)
Clonality:	Polyclonal
Reactivity:	Human, Mouse
Tested Applications:	ELISA, WB, IF/ICC
Host:	Rabbit
Recommended dilutions:	WB: 1/500 - 1/3000, IF/ICC: 1/100 - 1/500, ELISA: 1/10000. Optimal dilutions/concentrations should be determined by the end user.
Conjugation:	Unconjugated
Immunogen:	The antiserum was produced against synthesized peptide derived from internal of human DOK6.
Isotype:	IgG
Form:	Liquid
Purification:	Purified from rabbit antiserum by affinity chromatography using epitope-specific immunogen.

Datasheet

Version: 1.0.0
Revision date: 23 Feb 2025



Storage: Aliquot and store at -20°C. Avoid repeated freeze/thaw cycles.

UniProt Primary AC: Q6PKX4 ([UniProt](#), [ExPASy](#))

KEGG: hsa:220164

String: [9606.ENSP00000372160](#)

Buffer: PBS (without Mg²⁺ and Ca²⁺), pH 7.4, 150 mM NaCl, 0.02% sodium azide, 50% glycerol.

Concentration: 1 mg/ml

Note: This product is for research use only.

For Reference Only