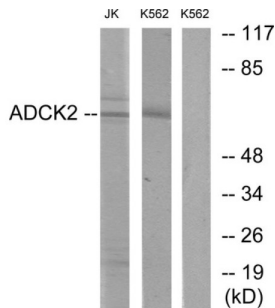


Uncharacterized AarF Domain-Containing Protein Kinase 2 (ADCK2) Antibody

Catalogue No.: abx013674



Western blot analysis of extracts from Jurkat cells and K562 cells, using ADCK2 antibody.

Rabbit polyclonal antibody against ADCK2 protein. Immunogen region is Internal.

| | |
|-------------------------------|---|
| Target: | Uncharacterized AarF Domain-Containing Protein Kinase 2 (ADCK2) |
| Clonality: | Polyclonal |
| Reactivity: | Human |
| Tested Applications: | ELISA, WB |
| Host: | Rabbit |
| Recommended dilutions: | WB: 1/500 - 1/3000, ELISA: 1/1000. Optimal dilutions/concentrations should be determined by the end user. |
| Conjugation: | Unconjugated |
| Immunogen: | The antiserum was produced against synthesized peptide derived from internal of human ADCK2. |
| Isotype: | IgG |
| Form: | Liquid |
| Purification: | Purified from rabbit antiserum by affinity chromatography using epitope-specific immunogen. |
| Storage: | Aliquot and store at -20°C. Avoid repeated freeze/thaw cycles. |
| UniProt Primary AC: | Q7Z695 (UniProt , ExpASY) |
| KEGG: | hsa:90956 |

Datasheet

Version: 2.0.0

Revision date: 09 Nov 2024



String: [9606.ENSF00000072869](#)

Enzyme Commission Number: EC 2.7.11.-

Buffer: PBS (without Mg^{2+} and Ca^{2+}), pH 7.4, 150 mM NaCl, 0.02% sodium azide, 50% glycerol.

Concentration: 1 mg/ml

Note: This product is for research use only.

For Reference Only