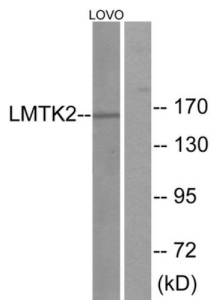
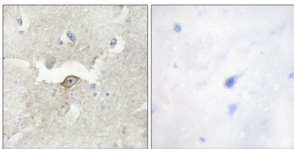


Lemur Tyrosine Kinase 2 (LMTK2) Antibody

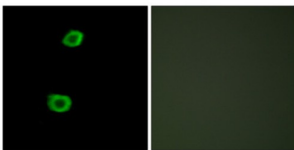
Catalogue No.: abx013688



Western blot analysis of extracts from LOVO cells, using LMTK2 antibody.



Immunohistochemistry analysis of paraffin-embedded human brain tissue using LMTK2 antibody.



Immunofluorescence analysis of HepG2 cells, using LMTK2 antibody.

Rabbit polyclonal antibody against LMTK2 protein. Immunogen region is Internal.

Target:	Lemur Tyrosine Kinase 2 (LMTK2)
Clonality:	Polyclonal
Reactivity:	Human
Tested Applications:	ELISA, WB, IHC, IF/ICC
Host:	Rabbit
Recommended dilutions:	WB: 1/500 - 1/3000, IHC: 1/50 - 1/100, IF/ICC: 1/100 - 1/500, ELISA: 1/20000. Optimal dilutions/concentrations should be determined by the end user.
Conjugation:	Unconjugated

Datasheet

Version: 3.0.0
Revision date: 13 Mar 2025



Immunogen:	The antiserum was produced against synthesized peptide derived from internal of human LMTK2.
Isotype:	IgG
Form:	Liquid
Purification:	Purified from rabbit antiserum by affinity chromatography using epitope-specific immunogen.
Storage:	Aliquot and store at -20°C. Avoid repeated freeze/thaw cycles.
UniProt Primary AC:	Q8IWU2 (UniProt , ExPASy)
KEGG:	hsa:22853
String:	9606.ENSP00000297293
Enzyme Commission Number:	EC 2.7.11.1
Sequence:	CFEKEKPRKIFDSE
Buffer:	PBS (without Mg ²⁺ and Ca ²⁺), pH 7.4, 150 mM NaCl, 0.02% sodium azide, 50% glycerol.
Concentration:	1 mg/ml
Note:	THIS PRODUCT IS FOR RESEARCH USE ONLY. NOT FOR USE IN DIAGNOSTIC, THERAPEUTIC OR COSMETIC PROCEDURES. NOT FOR HUMAN OR ANIMAL CONSUMPTION.

For Reference Only