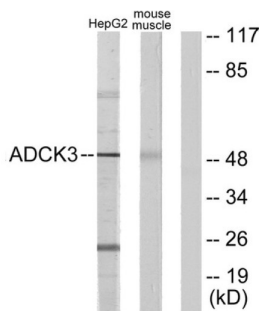


Atypical Kinase COQ8A, Mitochondrial (ADCK3) Antibody

Catalogue No.: abx013708



Western blot analysis of extracts from HepG2 cells and mouse muscle cells, using ADCK3 antibody.

Rabbit polyclonal antibody against ADCK3 protein. Immunogen region is Internal.

Target:	Atypical Kinase COQ8A, Mitochondrial (ADCK3)
Clonality:	Polyclonal
Reactivity:	Human, Mouse, Rat
Tested Applications:	ELISA, WB
Host:	Rabbit
Recommended dilutions:	WB: 1/500 - 1/3000, ELISA: 1/10000. Optimal dilutions/concentrations should be determined by the end user.
Conjugation:	Unconjugated
Immunogen:	The antiserum was produced against synthesized peptide derived from internal of human ADCK3.
Isotype:	IgG
Form:	Liquid
Purification:	Purified from rabbit antiserum by affinity chromatography using epitope-specific immunogen.
Storage:	Aliquot and store at -20°C. Avoid repeated freeze/thaw cycles.
UniProt Primary AC:	Q8NI60 (UniProt , ExPASy)
KEGG:	hsa:56997
String:	9606.ENSP00000355741

Datasheet

Version: 1.0.0

Revision date: 06 Oct 2024



- Buffer:** PBS (without Mg^{2+} and Ca^{2+}), pH 7.4, 150 mM NaCl, 0.02% sodium azide, 50% glycerol.
- Concentration:** 1 mg/ml
- Note:** This product is for research use only.

For Reference Only