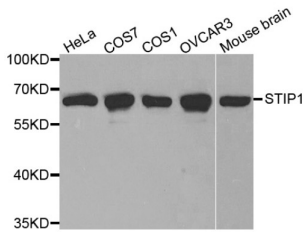
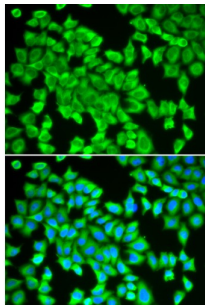


Stress-Induced-Phosphoprotein 1 (STIP1) Antibody

Catalogue No.: abx001131



Western blot analysis of extracts of various cell lines, using STIP1 antibody (abx001131) at 1/1000 dilution.



Immunofluorescence analysis of HeLa cells using STIP1 antibody (abx001131). Blue: DAPI for nuclear staining.

STIP1 Antibody is a Rabbit Polyclonal antibody against STIP1. STIP1 is an adaptor protein that coordinates the functions of HSP70 (see HSPA1A; MIM 140550) and HSP90 (see HSP90AA1; MIM 140571) in protein folding. It is thought to assist in the transfer of proteins from HSP70 to HSP90 by binding both HSP90 and substrate-bound HSP70. STIP1 also stimulates the ATPase activity of HSP70 and inhibits the ATPase activity of HSP90, suggesting that it regulates both the conformations and ATPase cycles of these chaperones (Song and Masison, 2005 [PubMed 16100115]). [supplied by OMIM, Jul 2009]

Target: Stress-Induced-Phosphoprotein 1 (STIP1)

Clonality: Polyclonal

Reactivity: Human, Mouse, Rat

Tested Applications: WB, IHC

Host: Rabbit

Recommended dilutions: WB: 1/500 - 1/2000, IHC-P: 1/50 - 1/200. Not tested in IHC-F. Optimal dilutions/concentrations should be determined by the end user.

Conjugation: Unconjugated

Immunogen: Recombinant fusion protein containing a sequence corresponding to amino acids 1-300 of human STIP1.

Isotype: IgG

Datasheet

Version: 2.0.0
Revision date: 09 Nov 2024



Form:	Liquid
Purification:	Purified by affinity chromatography.
Storage:	Aliquot and store at -20°C. Avoid repeated freeze/thaw cycles.
UniProt Primary AC:	P31948 (UniProt , ExpASY)
Gene Symbol:	STIP1
GeneID:	10963
NCBI Accession:	NP_006810.1
KEGG:	hsa:10963
String:	9606.ENSP00000351646
Molecular Weight:	Calculated MW: 63 kDa Observed MW: 63 kDa
Buffer:	PBS, pH 7.3, containing 0.02% sodium azide, 50% glycerol.
Concentration:	> 0.2 mg/ml
Note:	This product is for research use only.

For Reference Only