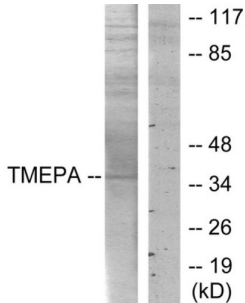
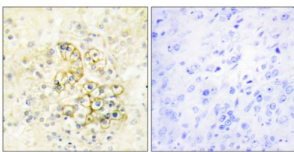


Prostate Transmembrane Protein Androgen Induced 1 (PMEPA1) Antibody

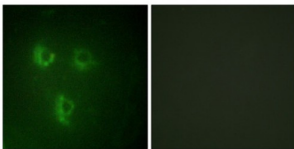
Catalogue No.: abx013748



Western blot analysis of extracts from HT-29 cells, using TMEPA antibody.



Immunohistochemistry analysis of paraffin-embedded human prostate tissue using TMEPA antibody.



Immunofluorescence analysis of HUVEC cells, using TMEPA antibody.

Rabbit polyclonal antibody against PMEPA1 protein. Immunogen region is Internal.

Target: Prostate Transmembrane Protein Androgen Induced 1 (PMEPA1)

Clonality: Polyclonal

Reactivity: Human

Tested Applications: ELISA, WB, IHC, IF/ICC

Host: Rabbit

Recommended dilutions: WB: 1/500 - 1/3000, IHC: 1/50 - 1/100, IF/ICC: 1/100 - 1/500, ELISA: 1/20000. Optimal dilutions/concentrations should be determined by the end user.

Datasheet

Version: 3.0.0
Revision date: 22 Dec 2024



Conjugation:	Unconjugated
Immunogen:	The antiserum was produced against synthesized peptide derived from internal of human TMEPA.
Isotype:	IgG
Form:	Liquid
Purification:	Purified from rabbit antiserum by affinity chromatography using epitope-specific immunogen.
Storage:	Aliquot and store at -20°C. Avoid repeated freeze/thaw cycles.
UniProt Primary AC:	Q969W9 (UniProt , ExPASy)
KEGG:	hsa:56937
String:	9606.ENSP00000345826
Sequence:	CFAQRERFHRFQPTY
Buffer:	PBS (without Mg ²⁺ and Ca ²⁺), pH 7.4, 150 mM NaCl, 0.02% sodium azide, 50% glycerol.
Concentration:	1 mg/ml
Note:	This product is for research use only.

For Reference Only