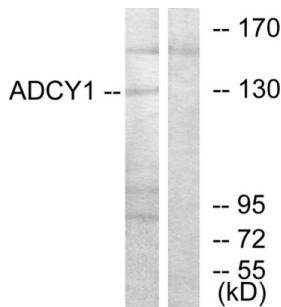


Datasheet

Version: 1.0.0
Revision date: 03 Dec 2024

Adenylate Cyclase 1, Brain (ADCY1) Antibody

Catalogue No.: abx013894



Western blot analysis of extracts from COLO205 cells, using ADCY1 antibody.

Rabbit polyclonal antibody against ADCY1 protein. Immunogen region is Internal.

Target:	Adenylate Cyclase 1, Brain (ADCY1)
Clonality:	Polyclonal
Reactivity:	Human, Mouse
Tested Applications:	ELISA, WB
Host:	Rabbit
Recommended dilutions:	WB: 1/500 - 1/3000, ELISA: 1/40000. Optimal dilutions/concentrations should be determined by the end user.
Conjugation:	Unconjugated
Immunogen:	The antiserum was produced against synthesized peptide derived from internal of human ADCY1.
Isotype:	IgG
Form:	Liquid
Purification:	Purified from rabbit antiserum by affinity chromatography using epitope-specific immunogen.
Storage:	Aliquot and store at -20°C. Avoid repeated freeze/thaw cycles.
UniProt Primary AC:	Q08828 (UniProt , ExpASY)
KEGG:	hsa:107
String:	9606.ENSP00000297323

Datasheet

Version: 1.0.0

Revision date: 03 Dec 2024



Enzyme Commission Number: EC 4.6.1.1

Buffer: PBS (without Mg^{2+} and Ca^{2+}), pH 7.4, 150 mM NaCl, 0.02% sodium azide, 50% glycerol.

Concentration: 1 mg/ml

Note: This product is for research use only.

For Reference Only