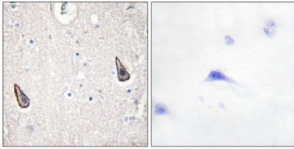
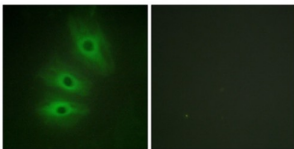


Adenylate Cyclase Type 5/6 (ADCY5/6) Antibody

Catalogue No.: abx013897



Immunohistochemistry analysis of paraffin-embedded human brain tissue using ADCY5/6 antibody.



Immunofluorescence analysis of HeLa cells, using ADCY5/6 antibody.

Rabbit polyclonal antibody against ADCY5/6 protein. Immunogen region is C-terminal.

Target:	Adenylate Cyclase Type 5/6 (ADCY5/6)
Clonality:	Polyclonal
Reactivity:	Human, Mouse, Rat
Tested Applications:	ELISA, IHC, IF/ICC
Host:	Rabbit
Recommended dilutions:	IHC: 1/50 - 1/100, IF/ICC: 1/100 - 1/500, ELISA: 1/20000. Optimal dilutions/concentrations should be determined by the end user.
Conjugation:	Unconjugated
Immunogen:	The antiserum was produced against synthesized peptide derived from C-terminal of human ADCY5/6.
Isotype:	IgG
Form:	Liquid
Purification:	Purified from rabbit antiserum by affinity chromatography using epitope-specific immunogen.

Datasheet

Version: 2.0.0

Revision date: 05 Feb 2025



Storage: Aliquot and store at -20°C. Avoid repeated freeze/thaw cycles.

UniProt Primary AC: O43306 ([UniProt](#), [ExPASy](#)) O95622 ([UniProt](#), [ExPASy](#))

Enzyme Commission Number: EC 4.6.1.1

Sequence: CHFLARERRNDELYY

Buffer: PBS (without Mg²⁺ and Ca²⁺), pH 7.4, 150 mM NaCl, 0.02% sodium azide, 50% glycerol.

Concentration: 1 mg/ml

Note: This product is for research use only.

For Reference Only