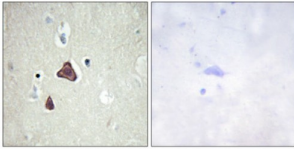
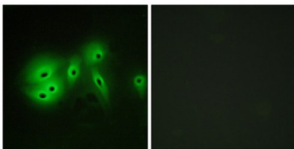


## Adenylate Cyclase Type 8 (ADCY8) Antibody

Catalogue No.: abx013898



Immunohistochemistry analysis of paraffin-embedded human brain tissue, using ADCY8 antibody.



Immunofluorescence analysis of A549 cells, using ADCY8 antibody.

Rabbit polyclonal antibody against ADCY8 protein. Immunogen region is Internal.

<b>Target:</b>	Adenylate Cyclase Type 8 (ADCY8)
<b>Clonality:</b>	Polyclonal
<b>Reactivity:</b>	Human, Mouse, Rat
<b>Tested Applications:</b>	ELISA, IHC, IF/ICC
<b>Host:</b>	Rabbit
<b>Recommended dilutions:</b>	IHC: 1/50 - 1/100, IF/ICC: 1/100 - 1/500, ELISA: 1/40000. Optimal dilutions/concentrations should be determined by the end user.
<b>Conjugation:</b>	Unconjugated
<b>Immunogen:</b>	The antiserum was produced against synthesized peptide derived from internal of human ADCY8.
<b>Isotype:</b>	IgG
<b>Form:</b>	Liquid
<b>Purification:</b>	Purified from rabbit antiserum by affinity chromatography using epitope-specific immunogen.

# Datasheet

Version: 3.0.0  
Revision date: 13 Mar 2025



<b>Storage:</b>	Aliquot and store at -20°C. Avoid repeated freeze/thaw cycles.
<b>UniProt Primary AC:</b>	P40145 ( <a href="#">UniProt</a> , <a href="#">ExPASy</a> )
<b>Gene Symbol:</b>	ADCY8
<b>GeneID:</b>	<a href="#">114</a>
<b>OMIM:</b>	<a href="#">103070</a>
<b>HGNC:</b>	239
<b>KEGG:</b>	hsa:114
<b>Ensembl:</b>	ENSG00000155897
<b>String:</b>	<a href="#">9606.ENSP00000286355</a>
<b>Enzyme Commission Number:</b>	EC 4.6.1.1
<b>Sequence:</b>	CRHFLEKDRDNEELY
<b>Buffer:</b>	PBS (without Mg <sup>2+</sup> and Ca <sup>2+</sup> ), pH 7.4, 150 mM NaCl, 0.02% sodium azide, 50% glycerol.
<b>Concentration:</b>	1 mg/ml
<b>Note:</b>	THIS PRODUCT IS FOR RESEARCH USE ONLY. NOT FOR USE IN DIAGNOSTIC, THERAPEUTIC OR COSMETIC PROCEDURES. NOT FOR HUMAN OR ANIMAL CONSUMPTION.

For Reference Only