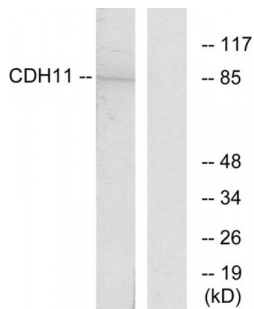


Cadherin 11 (CDH11) Antibody

Catalogue No.: abx013915



Western blot analysis of extracts from Jurkat cells, using CDH11 antibody. The right lane is blocked with peptide.

Cadherin 11 (CDH11) Antibody is a rabbit polyclonal antibody against CDH11 protein. Immunogen region is Internal.

Target:	Cadherin 11 (CDH11)
Clonality:	Polyclonal
Reactivity:	Human, Mouse
Tested Applications:	ELISA, WB
Host:	Rabbit
Recommended dilutions:	WB: 1/500 - 1/3000, ELISA: 1/20000. Optimal dilutions/concentrations should be determined by the end user.
Conjugation:	Unconjugated
Immunogen:	The antiserum was produced against synthesized peptide derived from the internal region of human CDH11.
Isotype:	IgG
Form:	Liquid
Purification:	Purified from rabbit antiserum by affinity chromatography using epitope-specific immunogen.
Storage:	Aliquot and store at -20°C. Avoid repeated freeze/thaw cycles.
UniProt Primary AC:	P55287 (UniProt , ExpASY)
KEGG:	hsa:1009
String:	9606.ENSP00000268603

Datasheet

Version: 2.0.0

Revision date: 12 Jul 2024



- Buffer:** PBS (without Mg^{2+} and Ca^{2+}), pH 7.4, 150 mM NaCl, 0.02% sodium azide, 50% glycerol.
- Concentration:** 1 mg/ml
- Note:** This product is for research use only.

For Reference Only