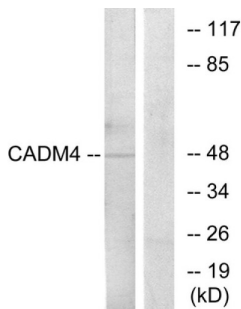
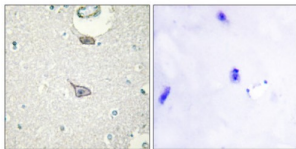


Cell Adhesion Molecule 4 (CADM4) Antibody

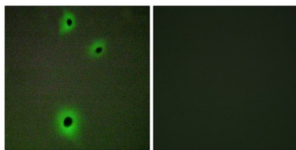
Catalogue No.: abx013926



Western blot analysis of extracts from RAW264.7 cells, using CADM4 antibody.



Immunohistochemistry analysis of paraffin-embedded human brain tissue using CADM4 antibody.



Immunofluorescence analysis of A549 cells, using CADM4 antibody.

Rabbit polyclonal antibody against CADM4 protein. Immunogen region is C-terminal.

Target: Cell Adhesion Molecule 4 (CADM4)

Clonality: Polyclonal

Reactivity: Human, Mouse, Rat

Tested Applications: ELISA, WB, IHC, IF/ICC

Host: Rabbit

Recommended dilutions: WB: 1/500 - 1/3000, IF/ICC: 1/100 - 1/500, IHC: 1/50 - 1/100, ELISA: 1/20000. Optimal dilutions/concentrations should be determined by the end user.

Conjugation: Unconjugated

Datasheet

Version: 3.0.0
Revision date: 10 Mar 2025



Immunogen:	The antiserum was produced against synthesized peptide derived from C-terminal of human CADM4.
Isotype:	IgG
Form:	Liquid
Purification:	Purified from rabbit antiserum by affinity chromatography using epitope-specific immunogen.
Storage:	Aliquot and store at -20°C. Avoid repeated freeze/thaw cycles.
UniProt Primary AC:	Q8NFZ8 (UniProt , ExPASy)
KEGG:	hsa:199731
String:	9606.ENSP00000222374
Sequence:	CGSDGHRKKEEFF
Buffer:	PBS (without Mg ²⁺ and Ca ²⁺), pH 7.4, 150 mM NaCl, 0.02% sodium azide, 50% glycerol.
Concentration:	1 mg/ml
Note:	THIS PRODUCT IS FOR RESEARCH USE ONLY. NOT FOR USE IN DIAGNOSTIC, THERAPEUTIC OR COSMETIC PROCEDURES. NOT FOR HUMAN OR ANIMAL CONSUMPTION.

For Reference Only