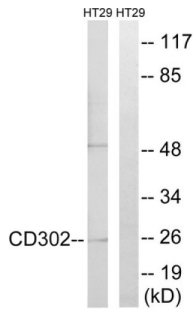
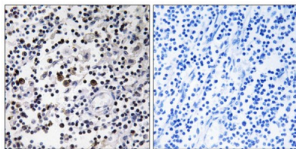


C-Type Lectin Domain Family 13 Member A (CD302) Antibody

Catalogue No.: abx013932



Western blot analysis of extracts from HT-29 cells, using CD302 antibody.



Immunohistochemistry analysis of paraffin-embedded human lymph node tissue using CD302 antibody.

Rabbit polyclonal antibody against CD302 protein. Immunogen region is Internal.

- Target:** C-Type Lectin Domain Family 13 Member A (CD302)
- Clonality:** Polyclonal
- Reactivity:** Human, Mouse, Rat
- Tested Applications:** ELISA, WB, IHC
- Host:** Rabbit
- Recommended dilutions:** WB: 1/500 - 1/3000, IHC: 1/50 - 1/100, ELISA: 1/40000. Optimal dilutions/concentrations should be determined by the end user.
- Conjugation:** Unconjugated
- Immunogen:** The antiserum was produced against synthesized peptide derived from internal of human CD302.
- Isotype:** IgG
- Form:** Liquid
- Purification:** Purified from rabbit antiserum by affinity chromatography using epitope-specific immunogen.

Datasheet

Version: 2.0.0
Revision date: 11 Sep 2024



Storage:	Aliquot and store at -20°C. Avoid repeated freeze/thaw cycles.
UniProt Primary AC:	Q8IX05 (UniProt , ExPASy)
KEGG:	hsa:9936
String:	9606.ENSP00000259053
Sequence:	CLDTLKKQWKGPDDI
Buffer:	PBS (without Mg ²⁺ and Ca ²⁺), pH 7.4, 150 mM NaCl, 0.02% sodium azide, 50% glycerol.
Concentration:	1 mg/ml
Note:	This product is for research use only.

For Reference Only