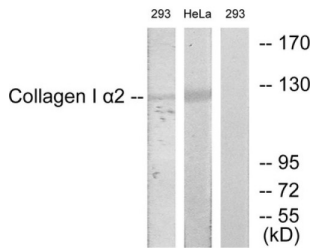
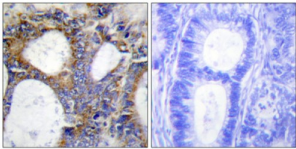


Collagen Type I Alpha 2 (COL1A2) Antibody

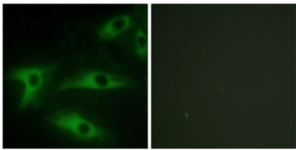
Catalogue No.: abx013948



Western blot analysis of extracts from 293 cells and HeLa cells, using COL1A2 antibody.



Immunohistochemistry analysis of paraffin-embedded human colon carcinoma tissue using COL1A2 antibody.



Immunofluorescence analysis of HeLa cells, using COL1A2 antibody.

Rabbit polyclonal antibody against COL1A2 protein. Immunogen region is Internal.

Target: Collagen Type I Alpha 2 (COL1A2)

Clonality: Polyclonal

Reactivity: Human

Tested Applications: ELISA, WB, IHC, IF/ICC

Host: Rabbit

Recommended dilutions: WB: 1/500 - 1/3000, IHC: 1/50 - 1/100, IF/ICC: 1/100 - 1/500, ELISA: 1/20000. Optimal dilutions/concentrations should be determined by the end user.

Conjugation: Unconjugated

Datasheet

Version: 2.0.0
Revision date: 23 Nov 2024



Immunogen:	The antiserum was produced against synthesized peptide derived from internal of human Collagen I alpha 2.
Isotype:	IgG
Form:	Liquid
Purification:	Purified from rabbit antiserum by affinity chromatography using epitope-specific immunogen.
Storage:	Aliquot and store at -20°C. Avoid repeated freeze/thaw cycles.
UniProt Primary AC:	P08123 (UniProt , ExPASy)
KEGG:	hsa:1278
String:	9606.ENSP00000297268
Sequence:	CTGDPGKNGDKGH
Buffer:	PBS (without Mg ²⁺ and Ca ²⁺), pH 7.4, 150 mM NaCl, 0.02% sodium azide, 50% glycerol.
Concentration:	1 mg/ml
Note:	This product is for research use only.

For Reference Only