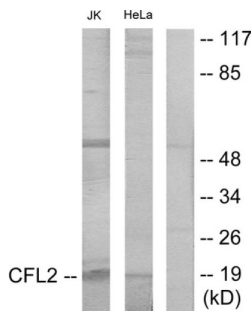


Cofilin (CFL) Antibody

Catalogue No.: abx013962



Western blot analysis of extracts from Jurkat cells and HeLa cells, using Cofilin antibody.

Rabbit polyclonal antibody against Cofilin protein. Immunogen region is Internal.

Target:	Cofilin (CFL)
Clonality:	Polyclonal
Reactivity:	Human, Mouse, Rat
Tested Applications:	ELISA, WB
Host:	Rabbit
Recommended dilutions:	WB: 1/500 - 1/3000, ELISA: 1/40000. Optimal dilutions/concentrations should be determined by the end user.
Conjugation:	Unconjugated
Immunogen:	The antiserum was produced against synthesized peptide derived from internal of human Cofilin.
Isotype:	IgG
Form:	Liquid
Purification:	Purified from rabbit antiserum by affinity chromatography using epitope-specific immunogen.
Storage:	Aliquot and store at -20°C. Avoid repeated freeze/thaw cycles.
UniProt Primary AC:	Q9Y281 (UniProt , ExPASy) P23528 (UniProt , ExPASy)
Buffer:	PBS (without Mg ²⁺ and Ca ²⁺), pH 7.4, 150 mM NaCl, 0.02% sodium azide, 50% glycerol.
Concentration:	1 mg/ml

Datasheet

Version: 1.0.0

Revision date: 23 Nov 2024



Note: This product is for research use only.

For Reference Only