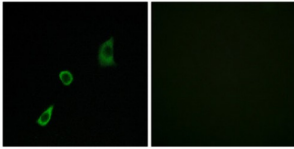


Fibroblast Growth Factor 23 (FGF23) Antibody

Catalogue No.: abx014000



Immunofluorescence analysis of HuvEc cells, using FGF23 antibody. The image on the right is blocked with the synthesized peptide.

Rabbit polyclonal antibody against FGF23 protein. Immunogen region is Internal.

Target:	Fibroblast Growth Factor 23 (FGF23)
Clonality:	Polyclonal
Reactivity:	Human, Mouse, Rat
Tested Applications:	ELISA, IF/ICC
Host:	Rabbit
Recommended dilutions:	ELISA: 1/20000, IF/ICC: 1/100 - 1/500. Optimal dilutions/concentrations should be determined by the end user.
Conjugation:	Unconjugated
Immunogen:	The antiserum was produced against synthesized peptide derived from the internal region of Human FGF23.
Isotype:	IgG
Form:	Liquid
Purification:	Purified from rabbit antiserum by affinity chromatography using epitope-specific immunogen.
Storage:	Aliquot and store at -20°C. Avoid repeated freeze/thaw cycles.
UniProt Primary AC:	Q9GZV9 (UniProt , ExPASy) Q9EPC2 (UniProt , ExPASy) Q8VI82 (UniProt , ExPASy)
Gene Symbol:	FGF23
GeneID:	8074 64654 170583

Datasheet

Version: 4.0.0
Revision date: 02 Jan 2024



OMIM: [605380](#)

NCBI Accession: NP_065689.1, NP_073148.1

HGNC: 3680

Ensembl: ENSG00000118972, ENSMUSG00000000182, ENSRNOG00000052205

String: [9606.ENSP00000237837](#) [10090.ENSMUSP00000000186](#) [10116.ENSRNOP00000026888](#)

Buffer: PBS (without Mg²⁺ and Ca²⁺), pH 7.4, 150 mM NaCl, 0.02% sodium azide, 50% glycerol.

Specificity: Detects endogenous levels of total FGF23 protein.

Concentration: 1 mg/ml

Note: This product is for research use only.

For Reference Only