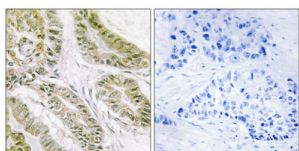
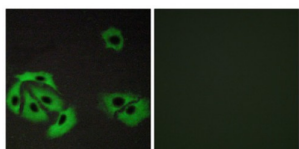


Bcl2 Associated X Protein (BAX) Antibody

Catalogue No.: abx014014



Immunohistochemistry analysis of paraffin-embedded human lung carcinoma tissue using BAX antibody.



Immunofluorescence analysis of A549 cells, using BAX antibody.

Rabbit polyclonal antibody against BAX protein. Immunogen region is Internal.

Target: Bcl2 Associated X Protein (BAX)

Clonality: Polyclonal

Reactivity: Human, Mouse, Rat

Tested Applications: ELISA, IHC, IF/ICC

Host: Rabbit

Recommended dilutions: IHC: 1/50 - 1/100, IF/ICC: 1/100 - 1/500, ELISA: 1/1000. Optimal dilutions/concentrations should be determined by the end user.

Conjugation: Unconjugated

Immunogen: The antiserum was produced against synthesized peptide derived from internal of human BAX.

Isotype: IgG

Form: Liquid

Purification: Purified from rabbit antiserum by affinity chromatography using epitope-specific immunogen.

Datasheet

Version: 3.0.0

Revision date: 15 Apr 2025



Storage: Aliquot and store at -20°C. Avoid repeated freeze/thaw cycles.

UniProt Primary AC: Q07812 ([UniProt](#), [ExPASy](#))

Sequence: CAVDTDSPREVFF

Buffer: PBS (without Mg^{2+} and Ca^{2+}), pH 7.4, 150 mM NaCl, 0.02% sodium azide, 50% glycerol.

Concentration: 1 mg/ml

Note: THIS PRODUCT IS FOR RESEARCH USE ONLY. NOT FOR USE IN DIAGNOSTIC, THERAPEUTIC OR COSMETIC PROCEDURES. NOT FOR HUMAN OR ANIMAL CONSUMPTION.

For Reference Only