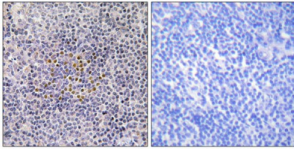
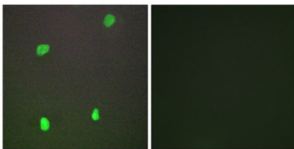


## X-Ray Repair Cross Complementing 3 (XRCC3) Antibody

Catalogue No.: abx014063



Immunohistochemistry analysis of paraffin-embedded human tonsil tissue using XRCC3 antibody.



Immunofluorescence analysis of COS-7 cells, using XRCC3 antibody.

Rabbit polyclonal antibody against XRCC3 protein. Immunogen region is Internal.

<b>Target:</b>	X-Ray Repair Cross Complementing 3 (XRCC3)
<b>Clonality:</b>	Polyclonal
<b>Reactivity:</b>	Human
<b>Tested Applications:</b>	ELISA, IHC, IF/ICC
<b>Host:</b>	Rabbit
<b>Recommended dilutions:</b>	IHC: 1/50 - 1/100, IF/ICC: 1/100 - 1/500, ELISA: 1/20000. Optimal dilutions/concentrations should be determined by the end user.
<b>Conjugation:</b>	Unconjugated
<b>Immunogen:</b>	The antiserum was produced against synthesized peptide derived from internal of human XRCC3.
<b>Isotype:</b>	IgG
<b>Form:</b>	Liquid
<b>Purification:</b>	Purified from rabbit antiserum by affinity chromatography using epitope-specific immunogen.

# Datasheet

Version: 1.0.0  
Revision date: 22 Nov 2024



**Storage:** Aliquot and store at -20°C. Avoid repeated freeze/thaw cycles.

**UniProt Primary AC:** O43542 ([UniProt](#), [ExPASy](#))

**KEGG:** hsa:7517

**String:** [9606.ENSP00000451974](#)

**Sequence:** CQLHQQKERFPTQHQ

**Buffer:** PBS (without Mg<sup>2+</sup> and Ca<sup>2+</sup>), pH 7.4, 150 mM NaCl, 0.02% sodium azide, 50% glycerol.

**Concentration:** 1 mg/ml

**Note:** This product is for research use only.

For Reference Only