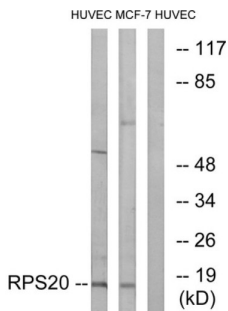
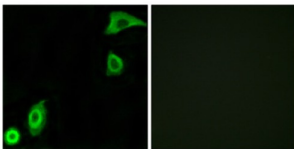


Small Ribosomal Subunit Protein uS10 (RPS20) Antibody

Catalogue No.: abx014099



Western blot analysis of extracts from HUVEC cells and MCF-7 cells, using RPS20 antibody.



Immunofluorescence analysis of A549 cells, using RPS20 antibody.

Rabbit polyclonal antibody against RPS20 protein. Immunogen region is Internal.

Target:	Small Ribosomal Subunit Protein uS10 (RPS20)
Clonality:	Polyclonal
Reactivity:	Human, Mouse, Rat
Tested Applications:	ELISA, WB, IF/ICC
Host:	Rabbit
Recommended dilutions:	WB: 1/500 - 1/3000, IF/ICC: 1/100 - 1/500, ELISA: 1/40000. Optimal dilutions/concentrations should be determined by the end user.
Conjugation:	Unconjugated
Immunogen:	The antiserum was produced against synthesized peptide derived from internal of human RPS20.
Isotype:	IgG
Form:	Liquid
Purification:	Purified from rabbit antiserum by affinity chromatography using epitope-specific immunogen.

Datasheet

Version: 4.0.0
Revision date: 05 Mar 2025



Storage:	Aliquot and store at -20°C. Avoid repeated freeze/thaw cycles.
UniProt Primary AC:	P60866 (UniProt , ExPASy)
Gene Symbol:	RPS20
GeneID:	6224
OMIM:	603682
HGNC:	10405
KEGG:	hsa:6224
Ensembl:	ENSG00000008988
String:	9606.ENSP00000429374
Buffer:	PBS (without Mg ²⁺ and Ca ²⁺), pH 7.4, 150 mM NaCl, 0.02% sodium azide, 50% glycerol.
Concentration:	1 mg/ml
Note:	THIS PRODUCT IS FOR RESEARCH USE ONLY. NOT FOR USE IN DIAGNOSTIC, THERAPEUTIC OR COSMETIC PROCEDURES. NOT FOR HUMAN OR ANIMAL CONSUMPTION.

For Reference Only