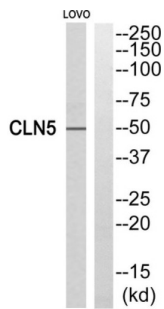


CLN5, Intracellular Trafficking Protein (CLN5) Antibody

Catalogue No.: abx014347



Western blot analysis of extracts from LOVO cells, using CLN5 antibody.

Rabbit polyclonal antibody against CLN5 protein. Immunogen region is Internal.

| | |
|-------------------------------|--|
| Target: | CLN5, Intracellular Trafficking Protein (CLN5) |
| Clonality: | Polyclonal |
| Reactivity: | Human, Mouse, Rat |
| Tested Applications: | ELISA, WB |
| Host: | Rabbit |
| Recommended dilutions: | WB: 1/500 - 1/3000, ELISA: 1/10000. Optimal dilutions/concentrations should be determined by the end user. |
| Conjugation: | Unconjugated |
| Immunogen: | The antiserum was produced against synthesized peptide derived from internal of human CLN5. |
| Isotype: | IgG |
| Form: | Liquid |
| Purification: | Purified from rabbit antiserum by affinity chromatography using epitope-specific immunogen. |
| Storage: | Aliquot and store at -20°C. Avoid repeated freeze/thaw cycles. |
| UniProt Primary AC: | O75503 (UniProt , ExpASY) |
| KEGG: | hsa:1203 |
| String: | 9606.ENSP00000366673 |

Datasheet

Version: 2.0.0

Revision date: 27 Nov 2024



Buffer: PBS (without Mg^{2+} and Ca^{2+}), pH 7.4, 150 mM NaCl, 0.02% sodium azide, 50% glycerol.

Concentration: 1 mg/ml

Note: This product is for research use only.

For Reference Only