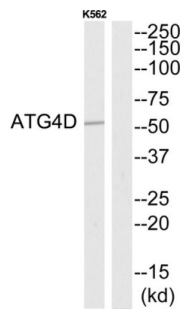


Autophagy Related 4D Cysteine Peptidase (ATG4D) Antibody

Catalogue No.: abx014409



Rabbit polyclonal antibody against ATG4D protein. Immunogen region is N-terminal.

| | |
|-------------------------------|--|
| Target: | Autophagy Related 4D Cysteine Peptidase (ATG4D) |
| Clonality: | Polyclonal |
| Reactivity: | Human |
| Tested Applications: | WB, IHC |
| Host: | Rabbit |
| Recommended dilutions: | Optimal dilutions/concentrations should be determined by the end user. |
| Conjugation: | Unconjugated |
| Immunogen: | The antiserum was produced against synthesized peptide derived from N-terminal of human ATG4D. |
| Isotype: | IgG |
| Form: | Liquid |
| Purification: | Purified from rabbit antiserum by affinity chromatography using epitope-specific immunogen. |
| Storage: | Aliquot and store at -20°C. Avoid repeated freeze/thaw cycles. |
| UniProt Primary AC: | Q86TL0 (UniProt , ExpASY) |
| KEGG: | hsa:84971 |
| String: | 9606.ENSP00000311318 |

Datasheet

Version: 4.0.0
Revision date: 23 Nov 2024



Sequence: CRRYRFEGEGDIQRF

Buffer: PBS (without Mg^{2+} and Ca^{2+}), pH 7.4, 150 mM NaCl, 0.02% sodium azide, 50% glycerol.

Concentration: 1 mg/ml

Note: This product is for research use only.

For Reference Only