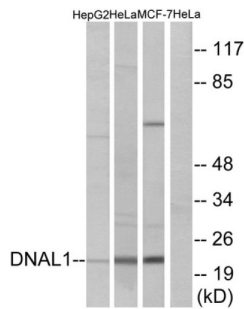


Dynein Axonemal Light Chain 1 (DNAL1) Antibody

Catalogue No.: abx014440



Western blot analysis of extracts from HepG2 cells, HeLa cells and MCF-7 cells, using DNAL1 antibody.

Rabbit polyclonal antibody against DNAL1 protein. Immunogen region is Internal.

Target:	Dynein Axonemal Light Chain 1 (DNAL1)
Clonality:	Polyclonal
Reactivity:	Human, Mouse
Tested Applications:	ELISA, WB
Host:	Rabbit
Recommended dilutions:	WB: 1/500 - 1/3000, ELISA: 1/40000. Optimal dilutions/concentrations should be determined by the end user.
Conjugation:	Unconjugated
Immunogen:	The antiserum was produced against synthesized peptide derived from internal of human DNAL1.
Isotype:	IgG
Form:	Liquid
Purification:	Purified from rabbit antiserum by affinity chromatography using epitope-specific immunogen.
Storage:	Aliquot and store at -20°C. Avoid repeated freeze/thaw cycles.
UniProt Primary AC:	Q4LDG9 (UniProt , ExPASy)
KEGG:	hsa:83544
String:	9606.ENSP00000452037

Datasheet

Version: 3.0.0

Revision date: 19 Mar 2025



Buffer: PBS (without Mg^{2+} and Ca^{2+}), pH 7.4, 150 mM NaCl, 0.02% sodium azide, 50% glycerol.

Concentration: 1 mg/ml

Note: THIS PRODUCT IS FOR RESEARCH USE ONLY. NOT FOR USE IN DIAGNOSTIC, THERAPEUTIC OR COSMETIC PROCEDURES. NOT FOR HUMAN OR ANIMAL CONSUMPTION.

For Reference Only