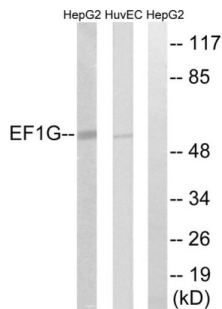


## Eukaryotic Translation Elongation Factor 1 Gamma (EEF1G) Antibody

Catalogue No.: abx014450



Western blot analysis of extracts from HepG2 cells and HUVEC cells, using EEF1G antibody.

Rabbit polyclonal antibody against EEF1G protein. Immunogen region is Internal.

<b>Target:</b>	Eukaryotic Translation Elongation Factor 1 Gamma (EEF1G)
<b>Clonality:</b>	Polyclonal
<b>Reactivity:</b>	Human, Mouse, Rat
<b>Tested Applications:</b>	ELISA, WB
<b>Host:</b>	Rabbit
<b>Recommended dilutions:</b>	WB: 1/500 - 1/3000, ELISA: 1/20000. Optimal dilutions/concentrations should be determined by the end user.
<b>Conjugation:</b>	Unconjugated
<b>Immunogen:</b>	The antiserum was produced against synthesized peptide derived from internal of human EEF1G.
<b>Isotype:</b>	IgG
<b>Form:</b>	Liquid
<b>Purification:</b>	Purified from rabbit antiserum by affinity chromatography using epitope-specific immunogen.
<b>Storage:</b>	Aliquot and store at -20°C. Avoid repeated freeze/thaw cycles.
<b>UniProt Primary AC:</b>	P26641 ( <a href="#">UniProt</a> , <a href="#">ExPASy</a> )
<b>KEGG:</b>	hsa:1937
<b>String:</b>	<a href="#">9606.ENSP00000331901</a>

# Datasheet

Version: 1.0.0

Revision date: 18 Oct 2024



- Buffer:** PBS (without  $Mg^{2+}$  and  $Ca^{2+}$ ), pH 7.4, 150 mM NaCl, 0.02% sodium azide, 50% glycerol.
- Concentration:** 1 mg/ml
- Note:** This product is for research use only.

For Reference Only