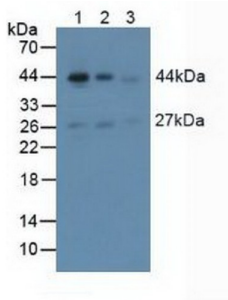
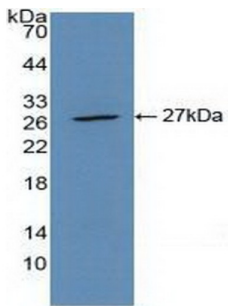


Actin Alpha 2, Smooth Muscle (ACTA2) Antibody

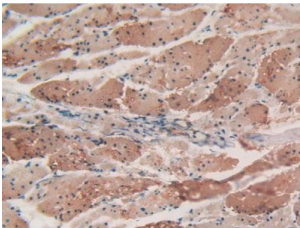
Catalogue No.: abx129306



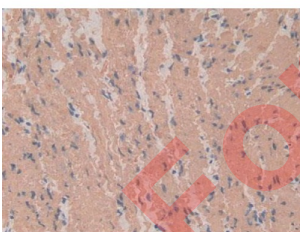
Western blot analysis of (1) Mouse Brain Tissue, (2) Mouse Heart Tissue and (3) Mouse Skeletal Muscle Tissue.



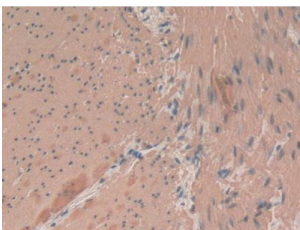
Western blot analysis of recombinant Human ACTa2.



IHC-P analysis of Human Esophagus Tissue, with DAB staining.



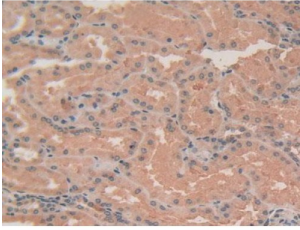
IHC-P analysis of Human Stomach Cancer Tissue, with DAB staining.



IHC-P analysis of Human Rectum Cancer Tissue, with DAB staining.

Datasheet

Version: 3.0.0
Revision date: 23 Feb 2025



IHC-P analysis of Human Stomach Tissue, with DAB staining.

ACTA2 Antibody is a Rabbit Polyclonal against ACTA2.

Target:	Actin Alpha 2, Smooth Muscle (ACTA2)
Clonality:	Polyclonal
Reactivity:	Mouse
Tested Applications:	WB, IHC, IF/ICC
Host:	Rabbit
Recommended dilutions:	WB: 0.01-2 µg/ml, IHC: 5-20 µg/ml, IF/ICC: 5-20 µg/ml. Optimal dilutions/concentrations should be determined by the end user.
Conjugation:	Unconjugated
Immunogen:	ACTA2 (Ile167-Phe377)
Form:	Liquid
Purification:	Purified by antigen-specific affinity chromatography, followed by Protein A affinity chromatography.
Storage:	Aliquot and store at -20°C. Avoid repeated freeze/thaw cycles.
Buffer:	0.01 M PBS, pH 7.4, containing 0.05% Proclin-300, 50% glycerol.
Concentration:	1 mg/ml
Note:	This product is for research use only.