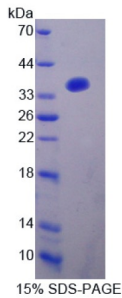


## Human A Kinase Anchor Protein 12 (AKAP12) Protein

Catalogue No.: abx165951



SDS-PAGE analysis of A Kinase Anchor Protein 12 Protein.

Human A Kinase Anchor Protein 12 (AKAP12) is a recombinant Human protein expressed in *E. coli*.

This protein is the immunogen for the following antibodies: [abx130632](#)

<b>Target:</b>	A Kinase Anchor Protein 12 (AKAP12)
<b>Origin:</b>	Human
<b>Expression:</b>	Recombinant
<b>Tested Applications:</b>	WB, SDS-PAGE
<b>Host:</b>	<i>E. coli</i>
<b>Conjugation:</b>	Unconjugated
<b>Form:</b>	Lyophilized
<b>Purity:</b>	> 95%
<b>Reconstitution:</b>	To keep the original salt concentration, we recommend reconstituting to the original concentration prior to lyophilization (see Concentration) in ddH <sub>2</sub> O. If a lower concentration is required, dilute in PBS, pH 7.4. If a higher concentration is required, the product can be reconstituted directly in PBS, pH 7.4, though please note that this will change the overall salt concentration. The stock concentration should be between 0.1-1.0 mg/ml. Do not vortex.
<b>Storage:</b>	Store at 2-8 °C for up to one month. Store at -80 °C for up to one year. Avoid repeated freeze/thaw cycles.
<b>UniProt Primary AC:</b>	Q02952 ( <a href="#">UniProt</a> , <a href="#">ExPASy</a> )
<b>KEGG:</b>	hsa:9590

# Datasheet

Version: 3.0.0  
Revision date: 22 Dec 2024



**String:** [9606.ENSF00000384537](#)

**Molecular Weight:** Calculated MW: 36.0 kDa

**Sequence Fragment:** Pro1485-Ser1782

**Sequence:** PVIVSA TTKKGLSSDL EGEKTTSLKW KSDEVDEQVA CQEVKVSVAI EDLEPENGIL ELETKSSKLV  
QN  
IIQTAVDQ FVRTEETATE MLTSELQTQA HVIKADSQDA GQETEKEGEE PQASAQDETP  
ITSAKEESES  
TAVGQAHSDI SKDMSEASEK TMTVEVEGST VNDQQLEEVV LPSEEEGGGA GTKSVPEDDG  
HALLAERIE  
K SLVEPKEDK GDDVDDPENQ NSALADTDAS GGLTKESPDT NGPKQKEKED AQEVELQEGK  
VHSESDK  
AIT PQAQEELQKQ ERESAKSELT ES

**Tag:** N-terminal His tag

**Buffer:** Prior to lyophilization: PBS, pH 7.4, containing 0.01% Sarcosyl, 1 mM DTT, 5% Trehalose and Proclin-300.

**Activity:** Not tested

**Concentration:** Prior to lyophilization: 200 µg/ml

**Note:** This product is for research use only.  
Not for human consumption, cosmetic, therapeutic or diagnostic use.

For Reference Only