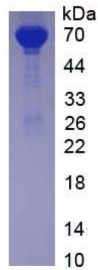


Rabbit Albumin (ALB) Protein

Catalogue No.: abx168601



SDS-PAGE analysis of Albumin Protein.

Rabbit Albumin Protein (Native) is a protein produced in Rabbit.

This protein is the immunogen for the following antibodies: [abx100069](#)

Target: Albumin (ALB)

Origin: Rabbit

Expression: Native

Tested Applications: WB, SDS-PAGE

Host: Rabbit

Conjugation: Unconjugated

Form: Lyophilized

Purity: > 90%

Reconstitution: To keep the original salt concentration, we recommend reconstituting to the original concentration prior to lyophilization (see Concentration) in ddH₂O. If a lower concentration is required, dilute in PBS, pH 7.4. If a higher concentration is required, the product can be reconstituted directly in PBS, pH 7.4, though please note that this will change the overall salt concentration. The stock concentration should be between 0.1-1.0 mg/ml. Do not vortex.

Storage: Store at 2-8 °C for up to one month. Store at -80 °C for up to one year. Avoid repeated freeze/thaw cycles.

UniProt Primary AC: P49065 ([UniProt](#), [ExPASy](#))

Gene Symbol: ALB

Datasheet

Version: 1.0.0
Revision date: 23 Feb 2025



GeneID: [100009195](#)

KEGG: ocu:100009195

String: [9986.ENSOCUP00000014006](#)

Molecular Weight: Calculated MW: 66.4 kDa
Observed MW: 66.4 kDa

Sequence: This product is a native protein and the sequence has not been determined.

Buffer: Prior to lyophilization: PBS, pH 7.4, containing 0.01% Sarcosyl, 1 mM DTT, 5% Trehalose and Proclin-300.

Activity: Not tested

Concentration: Prior to lyophilization: 200 µg/ml

Note: This product is for research use only.
Not for human consumption, cosmetic, therapeutic or diagnostic use.

For Reference Only