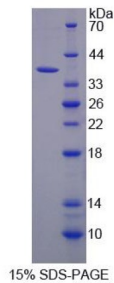


Human Aldehyde Dehydrogenase 3 Family, Member A1 (ALDH3A1) Protein

Catalogue No.: abx168106



SDS-PAGE analysis of Aldehyde Dehydrogenase 3 Family, Member A1 Protein.

Aldehyde Dehydrogenase 3 Family, Member A1 Protein is a recombinant Human protein expressed in *E. coli*.

Target:	Aldehyde Dehydrogenase 3 Family, Member A1 (ALDH3A1)
Origin:	Human
Expression:	Recombinant
Tested Applications:	WB, SDS-PAGE
Host:	<i>E. coli</i>
Conjugation:	Unconjugated
Form:	Lyophilized
Purity:	> 90%
Reconstitution:	To keep the original salt concentration, we recommend reconstituting to the original concentration prior to lyophilization (see Concentration) in ddH ₂ O. If a lower concentration is required, dilute in PBS, pH 7.4. If a higher concentration is required, the product can be reconstituted directly in PBS, pH 7.4, though please note that this will change the overall salt concentration. The stock concentration should be between 0.1-1.0 mg/ml. Do not vortex.
Storage:	Store at 2-8 °C for up to one month. Store at -80 °C for up to one year. Avoid repeated freeze/thaw cycles.
Molecular Weight:	Calculated MW: 37.5 kDa
Sequence Fragment:	Met1-Val311

Datasheet

Version: 1.0.0

Revision date: 03 Dec 2024



Tag:	N-terminal His tag
Buffer:	Prior to lyophilization: PBS, pH 7.4, containing 0.01% Sarcosyl, 1 mM DTT, 5% Trehalose and Proclin-300.
Activity:	Not tested
Concentration:	Prior to lyophilization: 200 µg/ml
Note:	This product is for research use only. Not for human consumption, cosmetic, therapeutic or diagnostic use.

For Reference Only