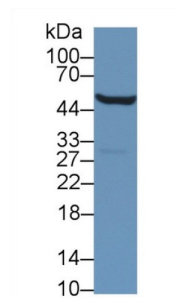
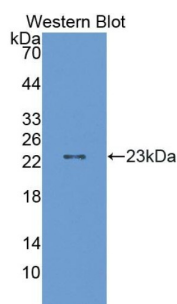


Aldehyde Dehydrogenase 9 Family, Member A1 (ALDH9A1) Antibody

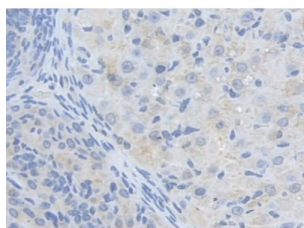
Catalogue No.: abx129896



Western blot analysis of Mouse Kidney lysate, using Mouse ALDH9A1 Antibody (1 µg/ml) and HRP-conjugated Goat Anti-Rabbit antibody ([abx400043](#), 0.2 µg/ml).



Western blot analysis of the recombinant protein.



IHC-P analysis of Mouse Ovary Tissue, with DAB staining.

Aldehyde Dehydrogenase 9 Family, Member A1 Antibody is a Rabbit Polyclonal against Aldehyde Dehydrogenase 9 Family, Member A1.

Target: Aldehyde Dehydrogenase 9 Family, Member A1 (ALDH9A1)

Clonality: Polyclonal

Reactivity: Mouse

Tested Applications: WB, IHC, IF/ICC

Host: Rabbit

Recommended dilutions: WB: 0.01-2 µg/ml, IHC: 5-20 µg/ml, IF/ICC: 5-20 µg/ml. Optimal dilutions/concentrations should be determined by the end user.

Datasheet

Version: 3.0.0
Revision date: 26 Apr 2025



Conjugation:	Unconjugated
Immunogen:	ALDH9A1 (Leu322-Phe494)
Form:	Liquid
Purification:	Purified by antigen-specific affinity chromatography, followed by Protein A affinity chromatography.
Storage:	Aliquot and store at -20°C. Avoid repeated freeze/thaw cycles.
UniProt Primary AC:	Q9JLJ2 (UniProt , ExPASy)
String:	10090.ENSMUSP00000028004
Buffer:	0.01 M PBS, pH 7.4, containing 0.05% Proclin-300, 50% glycerol.
Note:	THIS PRODUCT IS FOR RESEARCH USE ONLY. NOT FOR USE IN DIAGNOSTIC, THERAPEUTIC OR COSMETIC PROCEDURES. NOT FOR HUMAN OR ANIMAL CONSUMPTION.

For Reference Only