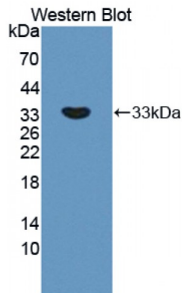
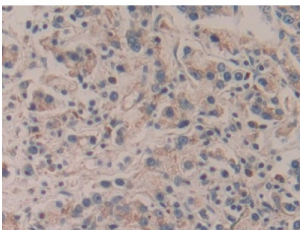


## Amyloid Beta Precursor Protein Binding Protein A2 (APBA2) Antibody

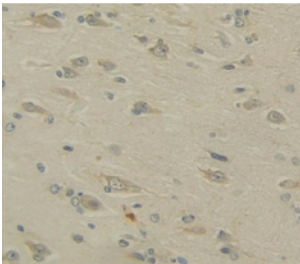
Catalogue No.: abx128982



Western blot analysis of the recombinant protein.



IHC-P analysis of Human Prostate cancer Tissue, with DAB staining.



IHC-P analysis of Kidney tissue, with DAB staining.

APBA2 Antibody is a Rabbit Polyclonal against APBA2.

**Target:** Amyloid Beta Precursor Protein Binding Protein A2 (APBA2)

**Clonality:** Polyclonal

**Reactivity:** Human

**Tested Applications:** WB, IHC, IF/ICC

**Host:** Rabbit

**Recommended dilutions:** WB: 0.5-2 µg/ml, IHC: 5-20 µg/ml, IF/ICC: 5-20 µg/ml. Optimal dilutions/concentrations should be determined by the end user.

**Conjugation:** Unconjugated

# Datasheet

Version: 2.0.0

Revision date: 17 Jul 2024



<b>Immunogen:</b>	APBA2 (Tyr459-Asn722)
<b>Form:</b>	Liquid
<b>Purification:</b>	Purified by antigen-specific affinity chromatography, followed by Protein A affinity chromatography.
<b>Storage:</b>	Aliquot and store at -20°C. Avoid repeated freeze/thaw cycles.
<b>Buffer:</b>	0.01 M PBS, pH 7.4, containing 0.05% Proclin-300, 50% glycerol.
<b>Note:</b>	This product is for research use only.

For Reference Only