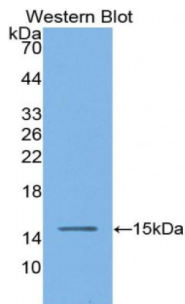
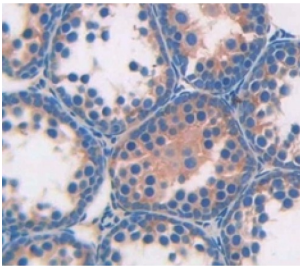


Angiotensin I Converting Enzyme (ACE) Antibody

Catalogue No.: abx129494



Western blot analysis of the recombinant protein.



IHC-P analysis of Kidney tissue, with DAB staining.

ACE Antibody is a Rabbit Polyclonal against ACE.

Target:	Angiotensin I Converting Enzyme (ACE)
Clonality:	Polyclonal
Reactivity:	Mouse
Tested Applications:	WB, IHC, IF/ICC
Host:	Rabbit
Recommended dilutions:	WB: 0.5-2 µg/ml, IHC: 5-20 µg/ml, IF/ICC: 5-20 µg/ml. Optimal dilutions/concentrations should be determined by the end user.
Conjugation:	Unconjugated
Immunogen:	ACE (Phe334-Leu409)
Form:	Liquid
Purification:	Purified by antigen-specific affinity chromatography, followed by Protein A affinity chromatography.
Storage:	Aliquot and store at -20°C. Avoid repeated freeze/thaw cycles.

Datasheet

Version: 1.0.0
Revision date: 27 Jul 2024



UniProt Primary AC: P09470 ([UniProt](#), [ExPASy](#))

KEGG: mmu:11421

String: [10090.ENSMUSP00000001963](#)

Buffer: 0.01 M PBS, pH 7.4, containing 0.05% Proclin-300, 50% glycerol.

Note: This product is for research use only.

For Reference Only