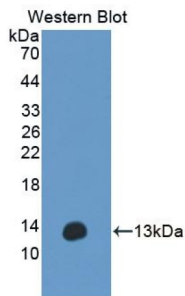
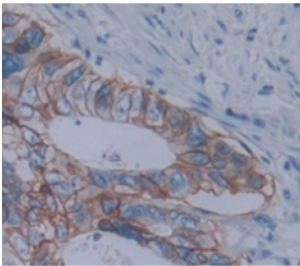


Anoctamin 6 (ANO6) Antibody

Catalogue No.: abx128357



Western blot analysis of the recombinant protein.



IHC-P analysis of Human Tissue, with DAB staining.

Anoctamin 6 Antibody is a Rabbit Polyclonal against Anoctamin 6.

Target: Anoctamin 6 (ANO6)

Clonality: Polyclonal

Reactivity: Human

Tested Applications: WB, IHC, IF/ICC

Host: Rabbit

Recommended dilutions: WB: 0.01-2 µg/ml, IHC: 5-20 µg/ml, IF/ICC: 5-20 µg/ml. Optimal dilutions/concentrations should be determined by the end user.

Conjugation: Unconjugated

Immunogen: ANO6 (Ala744-Asn824)

Form: Liquid

Purification: Purified by antigen-specific affinity chromatography, followed by Protein A affinity chromatography.

Storage: Aliquot and store at -20°C. Avoid repeated freeze/thaw cycles.

Datasheet

Version: 5.0.0
Revision date: 23 Jan 2025



UniProt Primary AC: Q4KMQ2 ([UniProt](#), [ExPASy](#))

KEGG: hsa:196527

String: [9606.ENSP00000409126](#)

Buffer: 0.01 M PBS, pH 7.4, containing 0.05% Proclin-300, 50% glycerol.

Concentration: 1 mg/ml

Note: This product is for research use only.

For Reference Only