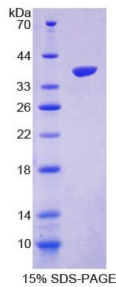


## Mouse Apelin (APLN) Protein

Catalogue No.: abx167372



SDS-PAGE analysis of Apelin Protein.

Apelin Protein is a recombinant Mouse protein expressed in E. coli.

<b>Target:</b>	Apelin (APLN)
<b>Origin:</b>	Mouse
<b>Expression:</b>	Recombinant
<b>Tested Applications:</b>	WB, SDS-PAGE
<b>Host:</b>	E. coli
<b>Conjugation:</b>	Unconjugated
<b>Form:</b>	Lyophilized
<b>Purity:</b>	> 95%
<b>Reconstitution:</b>	To keep the original salt concentration, we recommend reconstituting to the original concentration prior to lyophilization (see Concentration) in ddH <sub>2</sub> O. If a lower concentration is required, dilute in PBS, pH 7.4. If a higher concentration is required, the product can be reconstituted directly in PBS, pH 7.4, though please note that this will change the overall salt concentration. The stock concentration should be between 0.1-1.0 mg/ml. Do not vortex.
<b>Storage:</b>	Store at 2-8 °C for up to one month. Store at -80 °C for up to one year. Avoid repeated freeze/thaw cycles.
<b>Molecular Weight:</b>	Calculated MW: 36.2 kDa Observed MW (SDS-PAGE): 39 kDa
<b>Sequence Fragment:</b>	Val23-Phe77
<b>Tag:</b>	N-terminal His tag and GST tag

# Datasheet

Version: 2.0.0

Revision date: 07 Oct 2024



**Buffer:** Prior to lyophilization: PBS, pH 7.4, containing 0.01% Sarcosyl, 1 mM DTT, 5% Trehalose and Proclin-300.

**Activity:** Not tested

**Concentration:** Prior to lyophilization: 200 µg/ml

**Note:** This product is for research use only.  
Not for human consumption, cosmetic, therapeutic or diagnostic use.

For Reference Only