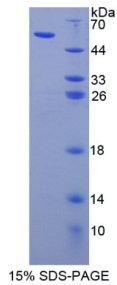


# Datasheet

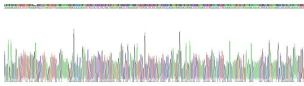
Version: 4.0.0  
Revision date: 06 Oct 2024

## Human Apolipoprotein L (APOL1) Protein

Catalogue No.: abx168142



SDS-PAGE analysis of recombinant Human Apolipoprotein L (APOL1) Protein.



Gene sequencing extract of recombinant Human Apolipoprotein L (APOL1) Protein.

Apolipoprotein L Protein is a recombinant Human protein expressed in *E. coli*.

**Target:** Apolipoprotein L (APOL1)

**Origin:** Human

**Expression:** Recombinant

**Tested Applications:** WB, SDS-PAGE

**Host:** *E. coli*

**Conjugation:** Unconjugated

**Form:** Lyophilized

**Purity:** > 95%

**Reconstitution:** Reconstitute in ddH<sub>2</sub>O to a concentration of 0.1-0.5 mg/ml. Do not vortex.

**Storage:** Store at 2-8 °C for up to one month. Store at -80 °C for up to one year. Avoid repeated freeze/thaw cycles.

**UniProt Primary AC:** O14791 ([UniProt](#), [ExPASy](#))

# Datasheet

Version: 4.0.0  
Revision date: 06 Oct 2024



**Molecular Weight:** Calculated MW: 54.2 kDa  
Observed MW (SDS-PAGE): 56 kDa

**Sequence Fragment:** Met1-Trp15, Val34-Ala238

**Sequence:** MEGAALLRVS VLCIW, VQQNVPS GTDTGDPQSK PLGDWAAGTM DPESSIFIED AIKYFKEKVS  
TQNLL  
LLLTD NEAWNGFVAA AELPRNEADE LRKALDNLAR QMIMKDKNWH DKGQQYRNWF  
LKEFPRLKSE LED  
NIRRLRA LADGVQKVHK GTTIANVVS G SLSISSGILT LVGMGLAPFT EGGSLVLLEP GMELGITAAL T  
GITSSTMDY GKKWWTQA

**Tag:** N-terminal His tag and GST tag

**Buffer:** Prior to lyophilization: PBS, pH 7.4, containing 0.01% Sarcosyl, 5% Trehalose.

**Activity:** Not tested

**Concentration:** Prior to lyophilization: 400 µg/ml

**Note:** This product is for research use only.  
Not for human consumption, cosmetic, therapeutic or diagnostic use.

For Reference Only