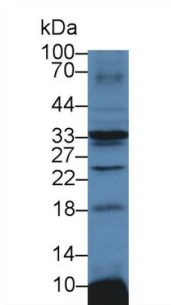
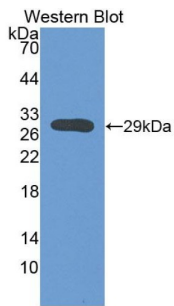


# ATPase, Na<sup>+</sup>/K<sup>+</sup> Transporting Beta 3 Polypeptide (ATP1B3) Antibody

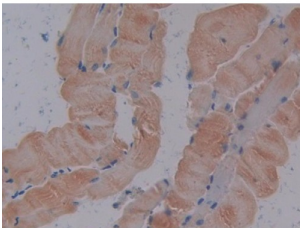
Catalogue No.: abx129651



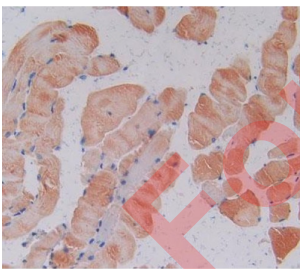
Western blot analysis of Mouse Heart lysate, using Mouse ATP1b3 Antibody (3 µg/ml) and HRP-conjugated Goat Anti-Rabbit antibody ([abx400043](#), 0.2 µg/ml).



Western blot analysis of the recombinant protein.



IHC-P analysis of Mouse Skeletal muscle Tissue, with DAB staining.



IHC-P analysis of skeletal muscle tissue, with DAB staining.

ATPase, Na<sup>+</sup>/K<sup>+</sup> Transporting Beta 3 Polypeptide Antibody is a Rabbit Polyclonal against ATPase, Na<sup>+</sup>/K<sup>+</sup> Transporting Beta 3 Polypeptide.

**Target:** ATPase, Na<sup>+</sup>/K<sup>+</sup> Transporting Beta 3 Polypeptide (ATP1B3)

**Clonality:** Polyclonal

# Datasheet

Version: 1.0.0  
Revision date: 03 Dec 2024



<b>Reactivity:</b>	Mouse
<b>Tested Applications:</b>	WB, IHC, IF/ICC
<b>Host:</b>	Rabbit
<b>Recommended dilutions:</b>	WB: 0.5-2 µg/ml, IHC: 5-20 µg/ml, IF/ICC: 5-20 µg/ml. Optimal dilutions/concentrations should be determined by the end user.
<b>Conjugation:</b>	Unconjugated
<b>Immunogen:</b>	ATP1b3 (Met61-Arg277)
<b>Form:</b>	Liquid
<b>Purification:</b>	Purified by antigen-specific affinity chromatography, followed by Protein A affinity chromatography.
<b>Storage:</b>	Aliquot and store at -20°C. Avoid repeated freeze/thaw cycles.
<b>UniProt Primary AC:</b>	P97370 ( <a href="#">UniProt</a> , <a href="#">ExPASy</a> )
<b>KEGG:</b>	mmu:11933
<b>String:</b>	<a href="#">10090.ENSMUSP00000034983</a>
<b>Buffer:</b>	0.01 M PBS, pH 7.4, containing 0.05% Proclin-300, 50% glycerol.
<b>Note:</b>	This product is for research use only.

For Reference Only