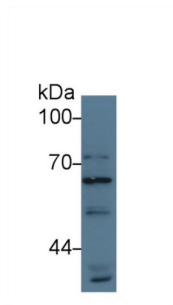
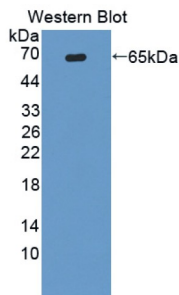


## Autophagy Related Protein 16 Like Protein 1 (ATG16L1) Antibody

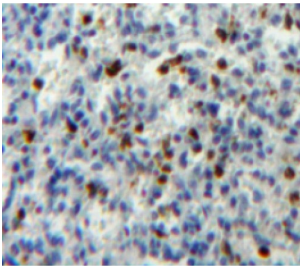
Catalogue No.: abx129062



Western blot analysis of Human HeLa cell lysate, using Human ATG16L1 Antibody (3 µg/ml) and HRP-conjugated Goat Anti-Rabbit antibody ([abx400043](#), 0.2 µg/ml).



Western blot analysis of the recombinant protein.



IHC-P analysis of spleen tissue, with DAB staining.

Autophagy Related Protein 16 Like Protein 1 Antibody is a Rabbit Polyclonal against Autophagy Related Protein 16 Like Protein 1.

**Target:** Autophagy Related Protein 16 Like Protein 1 (ATG16L1)

**Clonality:** Polyclonal

**Reactivity:** Human

**Tested Applications:** WB, IHC, IF/ICC

**Host:** Rabbit

**Recommended dilutions:** WB: 0.01-2 µg/ml, IHC: 5-20 µg/ml, IF/ICC: 5-20 µg/ml. Optimal dilutions/concentrations should be determined by the end user.

# Datasheet

Version: 3.0.0  
Revision date: 27 Mar 2025



<b>Conjugation:</b>	Unconjugated
<b>Immunogen:</b>	ATG16L1 (Met1-Gly284)
<b>Form:</b>	Liquid
<b>Purification:</b>	Purified by antigen-specific affinity chromatography, followed by Protein A affinity chromatography.
<b>Storage:</b>	Aliquot and store at -20°C. Avoid repeated freeze/thaw cycles.
<b>UniProt Primary AC:</b>	Q676U5 ( <a href="#">UniProt</a> , <a href="#">ExPASy</a> )
<b>KEGG:</b>	hsa:55054
<b>String:</b>	<a href="#">9606.ENSP00000375872</a>
<b>Buffer:</b>	0.01 M PBS, pH 7.4, containing 0.05% Proclin-300, 50% glycerol.
<b>Concentration:</b>	0.98 mg/ml
<b>Note:</b>	THIS PRODUCT IS FOR RESEARCH USE ONLY. NOT FOR USE IN DIAGNOSTIC, THERAPEUTIC OR COSMETIC PROCEDURES. NOT FOR HUMAN OR ANIMAL CONSUMPTION.

For Reference Only