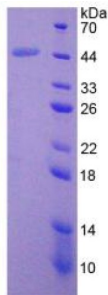


## Human Bone Morphogenetic Protein 2 (BMP2) Protein

Catalogue No.: abx166002



SDS-PAGE analysis of BMP2 Protein.

BMP2 Protein is a recombinant Human protein expressed in *E. coli*.

<b>Target:</b>	Bone Morphogenetic Protein 2 (BMP2)
<b>Origin:</b>	Human
<b>Expression:</b>	Recombinant
<b>Tested Applications:</b>	WB, SDS-PAGE
<b>Host:</b>	<i>E. coli</i>
<b>Conjugation:</b>	Unconjugated
<b>Form:</b>	Lyophilized
<b>Purity:</b>	> 90%
<b>Reconstitution:</b>	To keep the original salt concentration, we recommend reconstituting to the original concentration prior to lyophilization (see Concentration) in ddH <sub>2</sub> O. If a lower concentration is required, dilute in 20 mM Tris, 150 mM NaCl, pH 8.0. If a higher concentration is required, the product can be reconstituted directly in 20 mM Tris, 150 mM NaCl, pH 8.0, though please note that this will change the overall salt concentration. The stock concentration should be between 0.1-1.0 mg/ml. Do not vortex.
<b>Storage:</b>	Store at 2-8 °C for up to one month. Store at -80 °C for up to one year. Avoid repeated freeze/thaw cycles.
<b>Molecular Weight:</b>	Calculated MW: 46.1 kDa Observed MW (SDS-PAGE): 44 kDa
<b>Sequence Fragment:</b>	Leu24-Arg396
<b>Tag:</b>	N-terminal His tag

# Datasheet

Version: 1.0.0

Revision date: 13 Mar 2025



**Buffer:** Prior to lyophilization: 20 mM Tris, 150 mM NaCl, pH 8.0, containing 1 mM EDTA, 1 mM DTT, 0.01% Sarcosyl, 5% Trehalose and Proclin-300.

**Activity:** Not tested

**Concentration:** Prior to lyophilization: 200 µg/ml

**Note:** THIS PRODUCT IS FOR RESEARCH USE ONLY. NOT FOR USE IN DIAGNOSTIC, THERAPEUTIC OR COSMETIC PROCEDURES. NOT FOR HUMAN OR ANIMAL CONSUMPTION.

For Reference Only