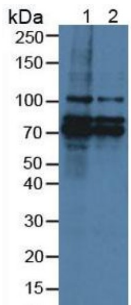
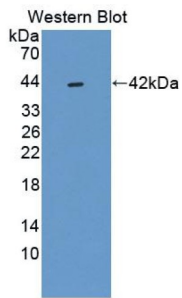


Breast Carcinoma Amplified Sequence 3 (BCAS3) Antibody

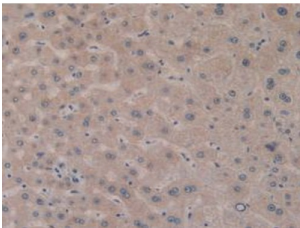
Catalogue No.: abx129009



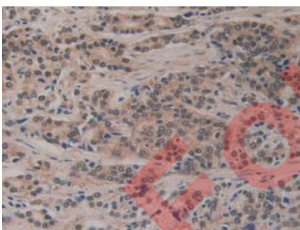
Western blot analysis of (1) Human HeLa cells and (2) Human MCF7 Cells.



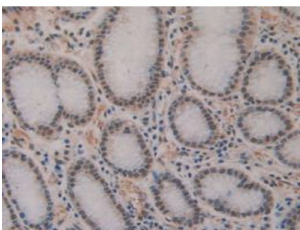
Western blot analysis of recombinant Human BCAS3.



IHC-P analysis of Human Liver Tissue, with DAB staining.



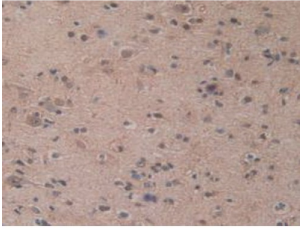
IHC-P analysis of Human Prostate Gland Cancer Tissue, with DAB staining.



IHC-P analysis of Human Stomach Tissue, with DAB staining.

Datasheet

Version: 2.0.0
Revision date: 13 Mar 2025



IHC-P analysis of Human Brain Tissue, with DAB staining.

Breast Carcinoma Amplified Sequence 3 Antibody is a Rabbit Polyclonal against Breast Carcinoma Amplified Sequence 3.

Target:	Breast Carcinoma Amplified Sequence 3 (BCAS3)
Clonality:	Polyclonal
Reactivity:	Human
Tested Applications:	WB, IHC, IF/ICC
Host:	Rabbit
Recommended dilutions:	WB: 0.01-2 µg/ml, IHC: 5-20 µg/ml, IF/ICC: 5-20 µg/ml. Optimal dilutions/concentrations should be determined by the end user.
Conjugation:	Unconjugated
Immunogen:	BCAS3 (Met230-Gly546)
Form:	Liquid
Purification:	Purified by antigen-specific affinity chromatography, followed by Protein A affinity chromatography.
Storage:	Aliquot and store at -20°C. Avoid repeated freeze/thaw cycles.
Buffer:	0.01 M PBS, pH 7.4, containing 0.05% Proclin-300, 50% glycerol.
Note:	THIS PRODUCT IS FOR RESEARCH USE ONLY. NOT FOR USE IN DIAGNOSTIC, THERAPEUTIC OR COSMETIC PROCEDURES. NOT FOR HUMAN OR ANIMAL CONSUMPTION.