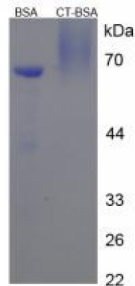


## Human Calcitonin Gene Related Peptide 1 / CGRP1 (CALCA) Peptide (BSA)

Catalogue No.: abx165658



SDS-PAGE analysis of Calcitonin Protein (BSA).

Calcitonin Protein is a Human protein.

<b>Target:</b>	Calcitonin Gene Related Peptide 1 / CGRP1 (CALCA)
<b>Origin:</b>	Human
<b>Expression:</b>	Synthetic
<b>Tested Applications:</b>	WB, SDS-PAGE
<b>Conjugation:</b>	BSA
<b>Form:</b>	Lyophilized
<b>Purity:</b>	> 90%
<b>Reconstitution:</b>	To keep the original salt concentration, we recommend reconstituting to the original concentration prior to lyophilization (see Concentration) in ddH <sub>2</sub> O. If a lower concentration is required, dilute in PBS, pH 7.4. If a higher concentration is required, the product can be reconstituted directly in PBS, pH 7.4, though please note that this will change the overall salt concentration. The stock concentration should be between 0.1-1.0 mg/ml. Do not vortex.
<b>Storage:</b>	Store at 2-8 °C for up to one month. Store at -80 °C for up to one year. Avoid repeated freeze/thaw cycles.
<b>Sequence Fragment:</b>	Phe100-Pro116
<b>Buffer:</b>	Prior to lyophilization: PBS, pH 7.4.
<b>Activity:</b>	Not tested

# Datasheet

Version: 2.0.0

Revision date: 01 Sep 2024



**Concentration:** Prior to lyophilization: 200 µg/ml

**Note:** This product is for research use only.  
Not for human consumption, cosmetic, therapeutic or diagnostic use.

For Reference Only