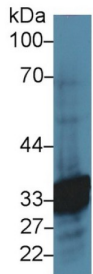
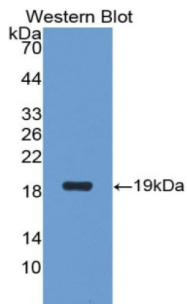


## Carbonic Anhydrase 6 (CA6) Antibody

Catalogue No.: abx130213



Western blot analysis of Rat Salivary gland lysate, using Rat CA6 Antibody (5 µg/ml) and HRP-conjugated Goat Anti-Rabbit antibody ([abx400043](#), 0.2 µg/ml).



Western blot analysis of the recombinant protein.

Carbonic Anhydrase 6 Antibody is a Rabbit Polyclonal against Carbonic Anhydrase 6.

<b>Target:</b>	Carbonic Anhydrase 6 (CA6)
<b>Clonality:</b>	Polyclonal
<b>Reactivity:</b>	Rat
<b>Tested Applications:</b>	WB, IHC, IF/ICC
<b>Host:</b>	Rabbit
<b>Recommended dilutions:</b>	WB: 0.01-2 µg/ml, IHC: 5-20 µg/ml, IF/ICC: 5-20 µg/ml. Optimal dilutions/concentrations should be determined by the end user.
<b>Conjugation:</b>	Unconjugated
<b>Immunogen:</b>	CA6 (Thr147-Ala275)
<b>Form:</b>	Liquid
<b>Purification:</b>	Purified by antigen-specific affinity chromatography, followed by Protein A affinity chromatography.
<b>Storage:</b>	Aliquot and store at -20°C. Avoid repeated freeze/thaw cycles.

# Datasheet

Version: 2.0.0

Revision date: 24 Apr 2025



**UniProt Primary AC:** F1LQ08 ([UniProt](#), [ExpASy](#))

**Gene Symbol:** CAR6

**GeneID:** [298657](#)

**KEGG:** rno:298657

**String:** [10116.ENSRNOP00000050476](#)

**Buffer:** 0.01 M PBS, pH 7.4, containing 0.05% Proclin-300, 50% glycerol.

**Note:** THIS PRODUCT IS FOR RESEARCH USE ONLY. NOT FOR USE IN DIAGNOSTIC, THERAPEUTIC OR COSMETIC PROCEDURES. NOT FOR HUMAN OR ANIMAL CONSUMPTION.

For Reference Only