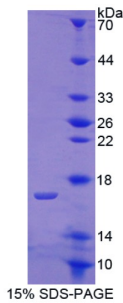


Datasheet

Version: 2.0.0
Revision date: 19 Nov 2024

Human Cartilage Oligomeric Matrix Protein (COMP) Protein

Catalogue No.: abx166151



SDS-PAGE analysis of recombinant Cartilage Oligomeric Matrix Protein.

Human Cartilage Oligomeric Matrix Protein (COMP) Protein is a recombinant Human protein expressed in a prokaryotic expression system (E. coli).

Target:	Cartilage Oligomeric Matrix Protein (COMP)
Origin:	Human
Expression:	Recombinant
Tested Applications:	WB, SDS-PAGE
Host:	E. coli
Conjugation:	Unconjugated
Form:	Lyophilized
Purity:	> 97%
Reconstitution:	Reconstitute in ddH ₂ O to a concentration of ≤ 0.1 mg/ml. Do not vortex.
Storage:	Store at 2-8 °C for up to one month. Store at -80 °C for up to one year. Avoid repeated freeze/thaw cycles.
UniProt Primary AC:	P49747 (UniProt , ExPASy)
KEGG:	hsa:1311
String:	9606.ENSP0000022271
Molecular Weight:	Calculated MW: 16.5 kDa Observed MW (SDS-PAGE): 16 kDa

Datasheet

Version: 2.0.0
Revision date: 19 Nov 2024



Sequence Fragment: Ser123-His240

Sequence: SHCTDVNE CNAHPCFPRV RCINTSPGFR CEACPPGYSG PTHQGVGLAF AKANKQVCTD
INECETGQHN
CVPNSVCINT RGSFQCGPCQ PGFVGDQASG CQRRARFCP DGSPSECHEH

Tag: N-terminal His tag

Buffer: Prior to lyophilization: PBS, pH 7.4, containing 0.01% Sarcosyl, 5% Trehalose.

Activity: Not tested

Concentration: Prior to lyophilization: 50 µg/ml

Note: This product is for research use only.
Not for human consumption, cosmetic, therapeutic or diagnostic use.

For Reference Only