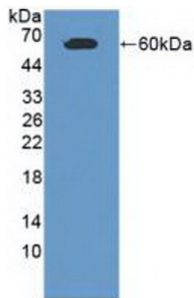
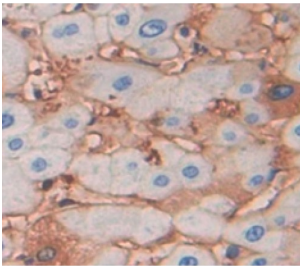


## Cell Adhesion Molecule 1 (CADM1) Antibody

Catalogue No.: abx128167



Western blot analysis of recombinant Human CADM1.



IHC-P analysis of Human Tissue, with DAB staining.

Cell Adhesion Molecule 1 Antibody is a Rabbit Polyclonal against Cell Adhesion Molecule 1.

<b>Target:</b>	Cell Adhesion Molecule 1 (CADM1)
<b>Clonality:</b>	Polyclonal
<b>Reactivity:</b>	Human
<b>Tested Applications:</b>	WB, IHC, IF/ICC
<b>Host:</b>	Rabbit
<b>Recommended dilutions:</b>	WB: 1-5 µg/ml, IHC: 5-20 µg/ml, IF/ICC: 5-20 µg/ml. Optimal dilutions/concentrations should be determined by the end user.
<b>Conjugation:</b>	Unconjugated
<b>Immunogen:</b>	CADM1 (Arg27-Val292)
<b>Form:</b>	Liquid
<b>Purification:</b>	Purified by antigen-specific affinity chromatography, followed by Protein A affinity chromatography.
<b>Storage:</b>	Aliquot and store at -20°C. Avoid repeated freeze/thaw cycles.

# Datasheet

Version: 3.0.0  
Revision date: 13 Mar 2025



**UniProt Primary AC:** Q9BY67 ([UniProt](#), [ExPASy](#))

**Gene Symbol:** CADM1

**GeneID:** [23705](#)

**OMIM:** [605686](#)

**HGNC:** 5951

**Ensembl:** ENSG00000182985

**String:** [9606.ENSP00000329797](#)

**Buffer:** 0.01 M PBS, pH 7.4, containing 0.05% Proclin-300, 50% glycerol.

**Note:** THIS PRODUCT IS FOR RESEARCH USE ONLY. NOT FOR USE IN DIAGNOSTIC, THERAPEUTIC OR COSMETIC PROCEDURES. NOT FOR HUMAN OR ANIMAL CONSUMPTION.

For Reference Only