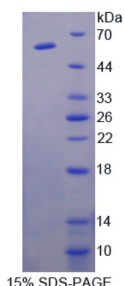


Human Cell Adhesion Molecule 1 (CADM1) Protein

Catalogue No.: abx168190



SDS-PAGE analysis of Cell Adhesion Molecule 1 Protein.

Cell Adhesion Molecule 1 Protein is a recombinant Human protein expressed in *E. coli*.

Target: Cell Adhesion Molecule 1 (CADM1)

Origin: Human

Expression: Recombinant

Tested Applications: WB, SDS-PAGE

Host: *E. coli*

Conjugation: Unconjugated

Form: Lyophilized

Purity: > 95%

Reconstitution: To keep the original salt concentration, we recommend reconstituting to the original concentration prior to lyophilization (see Concentration) in ddH₂O. If a lower concentration is required, dilute in PBS, pH 7.4. If a higher concentration is required, the product can be reconstituted directly in PBS, pH 7.4, though please note that this will change the overall salt concentration. The stock concentration should be between 0.1-1.0 mg/ml. Do not vortex.

Storage: Store at 2-8 °C for up to one month. Store at -80 °C for up to one year. Avoid repeated freeze/thaw cycles.

UniProt Primary AC: Q9BY67 ([UniProt](#), [ExPASy](#))

Gene Symbol: CADM1

GeneID: [23705](#)

Datasheet

Version: 3.0.0
Revision date: 14 Mar 2025



OMIM: [605686](#)

HGNC: 5951

Ensembl: ENSG00000182985

String: [9606.ENSP00000329797](#)

Molecular Weight: Calculated MW: 60.0 kDa

Sequence Fragment: Arg27-Val292

Tag: N-terminal His tag and GST tag

Buffer: Prior to lyophilization: PBS, pH 7.4, containing 0.01% Sarcosyl, 1 mM DTT, 5% Trehalose and Proclin-300.

Activity: Not tested

Concentration: Prior to lyophilization: 200 µg/ml

Note: THIS PRODUCT IS FOR RESEARCH USE ONLY. NOT FOR USE IN DIAGNOSTIC, THERAPEUTIC OR COSMETIC PROCEDURES. NOT FOR HUMAN OR ANIMAL CONSUMPTION.

For Reference Only