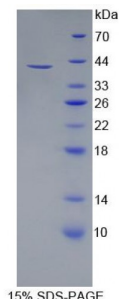


Human Cell Adhesion Molecule With Homology To L1CAM (CHL1) Protein

Catalogue No.: abx166901



SDS-PAGE analysis of recombinant Human CHL1 Protein.

Human Cell Adhesion Molecule With Homology To L1CAM (CHL1) Protein is a recombinant Human protein expressed in E. coli.

This protein is the immunogen for the following antibodies: [abx128383](#)

Target: Cell Adhesion Molecule With Homology To L1CAM (CHL1)

Origin: Human

Expression: Recombinant

Tested Applications: WB, SDS-PAGE

Host: E. coli

Conjugation: Unconjugated

Form: Lyophilized

Purity: > 95%

Reconstitution: To keep the original salt concentration, we recommend reconstituting to the original concentration prior to lyophilization (see Concentration) in ddH₂O. If a lower concentration is required, dilute in PBS, pH 7.4. If a higher concentration is required, the product can be reconstituted directly in PBS, pH 7.4, though please note that this will change the overall salt concentration. The stock concentration should be between 0.1-1.0 mg/ml. Do not vortex.

Storage: Store at 2-8 °C for up to one month. Store at -80 °C for up to one year. Avoid repeated freeze/thaw cycles.

UniProt Primary AC: O00533 ([UniProt](#), [ExPASy](#))

Datasheet

Version: 1.0.0

Revision date: 27 Jul 2024



Gene Symbol: CHL1

GeneID: [10752](#)

KEGG: hsa:10752

String: [9606.ENSP00000256509](#)

Molecular Weight: Calculated MW: 37.2 kDa

Sequence Fragment: Pro35-Glu328

Tag: N-terminal His tag

Buffer: Prior to lyophilization: PBS, pH 7.4, containing 0.01% Sarcosyl, 1 mM DTT, 5% Trehalose and Proclin-300.

Activity: Not tested

Concentration: Prior to lyophilization: 200 µg/ml

Note: This product is for research use only.
Not for human consumption, cosmetic, therapeutic or diagnostic use.

For Reference Only