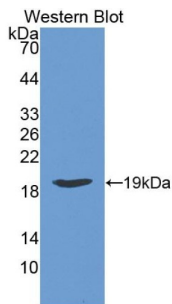
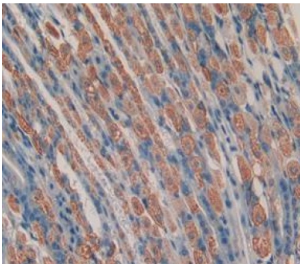


## Chemerin (RARRES2) Antibody

Catalogue No.: abx129542



Western blot analysis of the recombinant protein.



IHC-P analysis of stomach tissue, with DAB staining.

Chemerin Antibody is a Rabbit Polyclonal antibody against Chemerin.

|                               |   |
|-------------------------------|---|
| <b>Target:</b>                | Chemerin (RARRES2)  |
| <b>Clonality:</b>             | Polyclonal  |
| <b>Reactivity:</b>            | Mouse   |
| <b>Tested Applications:</b>   | WB, IHC, IF/ICC   |
| <b>Host:</b>                  | Rabbit  |
| <b>Recommended dilutions:</b> | WB: 0.01-2 µg/ml, IHC: 5-20 µg/ml, IF/ICC: 5-20 µg/ml. Optimal dilutions/concentrations should be determined by the end user. |
| <b>Conjugation:</b>           | Unconjugated  |
| <b>Immunogen:</b>             | CHEM (Glu21-Phe155)   |
| <b>Form:</b>                  | Liquid  |
| <b>Purification:</b>          | Purified by antigen-specific affinity chromatography, followed by Protein A affinity chromatography.                          |
| <b>Storage:</b>               | Aliquot and store at -20°C. Avoid repeated freeze/thaw cycles.  |

# Datasheet

Version: 2.0.0

Revision date: 13 Mar 2025



**UniProt Primary AC:** Q99969 ([UniProt](#), [ExpASY](#))

**KEGG:** hsa:5919

**String:** [9606.ENSP00000418009](#)

**Buffer:** 0.01 M PBS, pH 7.4, containing 0.05% Proclin-300, 50% glycerol.

**Note:** THIS PRODUCT IS FOR RESEARCH USE ONLY. NOT FOR USE IN DIAGNOSTIC, THERAPEUTIC OR COSMETIC PROCEDURES. NOT FOR HUMAN OR ANIMAL CONSUMPTION.

For Reference Only