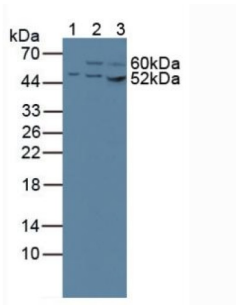
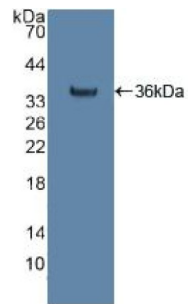


Citrate Synthase (CS) Antibody

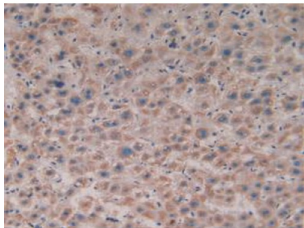
Catalogue No.:abx128582



Western blot analysis of (1) Human 293T Cells, (2) Human HeLa cells and (3) Human HepG2 Cells.



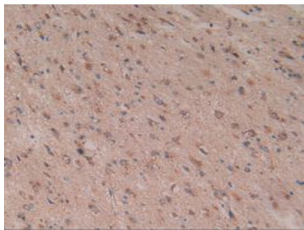
Western blot analysis of recombinant Human citrate synthase.



IHC-P analysis of Human Liver Cancer Tissue, with DAB staining.



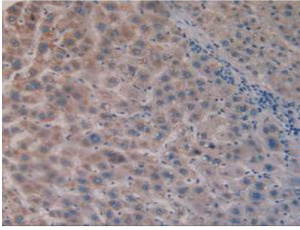
IHC-P analysis of Human Brain Tissue, with DAB staining.



IHC-P analysis of Human Glioma Tissue, with DAB staining.

Datasheet

Version: 2.0.0
Revision date: 28 Mar 2025



IHC-P analysis of Human Liver Tissue, with DAB staining.

Citrate Synthase Antibody is a Rabbit Polyclonal against Citrate Synthase.

Target:	Citrate Synthase (CS)
Clonality:	Polyclonal
Reactivity:	Human
Tested Applications:	WB, IHC, IF/ICC
Host:	Rabbit
Recommended dilutions:	WB: 0.01-2 µg/ml, IHC: 5-20 µg/ml, IF/ICC: 5-20 µg/ml. Optimal dilutions/concentrations should be determined by the end user.
Conjugation:	Unconjugated
Immunogen:	Citrate Synthase (Lys103-Ala394)
Form:	Liquid
Purification:	Purified by antigen-specific affinity chromatography, followed by Protein A affinity chromatography.
Storage:	Aliquot and store at -20°C. Avoid repeated freeze/thaw cycles.
UniProt Primary AC:	O75390 (UniProt , ExPASy)
KEGG:	hsa:1431
String:	9606.ENSP00000342056
Buffer:	0.01 M PBS, pH 7.4, containing 0.05% Proclin-300, 50% glycerol.
Note:	THIS PRODUCT IS FOR RESEARCH USE ONLY. NOT FOR USE IN DIAGNOSTIC, THERAPEUTIC OR COSMETIC PROCEDURES. NOT FOR HUMAN OR ANIMAL CONSUMPTION.