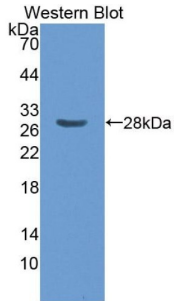
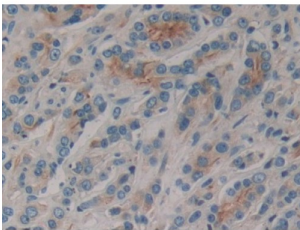


T-Cell Surface Glycoprotein Cd1E, Membrane-Associated (CD1E) Antibody

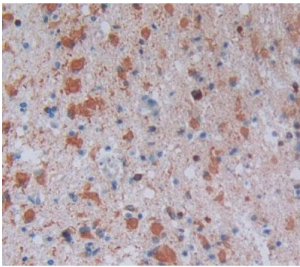
Catalogue No.: abx128766



Western blot analysis of the recombinant protein.



IHC-P analysis of Human Prostate cancer Tissue, with DAB staining.



IHC-P analysis of glioma tissue, with DAB staining.

Cluster Of Differentiation 1e Antibody is a Rabbit Polyclonal against Cluster Of Differentiation 1e.

Target: T-Cell Surface Glycoprotein Cd1E, Membrane-Associated (CD1E)

Clonality: Polyclonal

Reactivity: Human

Tested Applications: WB, IHC, IF/ICC

Host: Rabbit

Recommended dilutions: WB: 0.01-2 µg/ml, IHC: 5-20 µg/ml, IF/ICC: 5-20 µg/ml. Optimal dilutions/concentrations should be determined by the end user.

Datasheet

Version: 2.0.0
Revision date: 11 Feb 2025



Conjugation:	Unconjugated
Immunogen:	CD1e (Met39-Ala276)
Form:	Liquid
Purification:	Purified by antigen-specific affinity chromatography, followed by Protein A affinity chromatography.
Storage:	Aliquot and store at -20°C. Avoid repeated freeze/thaw cycles.
Buffer:	0.01 M PBS, pH 7.4, containing 0.05% Proclin-300, 50% glycerol.
Note:	This product is for research use only.

For Reference Only