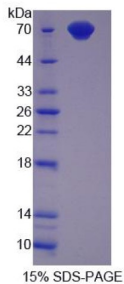


Rabbit T-Cell Surface Glycoprotein CD4 (CD4) Protein

Catalogue No.: abx168479



SDS-PAGE analysis of recombinant Rabbit Cluster Of Differentiation 4 Protein.

Rabbit Cluster Of Differentiation 4 Protein is a recombinant Rabbit protein expressed in *E. coli*.

This protein is the immunogen for the following antibodies: [abx130009](#)

Target:	T-Cell Surface Glycoprotein CD4 (CD4)
Origin:	Rabbit
Expression:	Recombinant
Tested Applications:	WB, SDS-PAGE
Host:	<i>E. coli</i>
Conjugation:	Unconjugated
Form:	Lyophilized
Purity:	> 90%
Reconstitution:	To keep the original salt concentration, we recommend reconstituting to the original concentration prior to lyophilization (see Concentration) in ddH ₂ O. If a lower concentration is required, dilute in PBS, pH 7.4. If a higher concentration is required, the product can be reconstituted directly in PBS, pH 7.4, though please note that this will change the overall salt concentration. The stock concentration should be between 0.1-1.0 mg/ml. Do not vortex.
Storage:	Store at 2-8 °C for up to one month. Store at -80 °C for up to one year. Avoid repeated freeze/thaw cycles.
Molecular Weight:	Calculated MW: 70.6 kDa
Sequence Fragment:	Val29-Pro396

Datasheet

Version: 2.0.0

Revision date: 03 Dec 2024



Sequence: VR GKAGAIVELP CQSSQKRNSV FNWKHANQVK ILGNQGSSSS SFWLKGN SPL SNRVESKKNM
WDQGSF
PLVI KDLRMDDSGT YICEVGDKKM EVELLVFRLL ANPNTRLLHG QSLTLTLEGP SVGSPSVQWK
SPEN
KIIETG PTC SMPKLRL QDSGTWSCHL SFQDQNKLEL DIKIIVLGFP KASATVYKKE GEQVEFSFPL NF
EDESLSGE LMWQVDGASS AQSWSFSLE DRKVSQKIL PDLKIQMSKG LPLSLTLPQA
LHRYAGSGNL
SLTLDKGLH QQVSLVMLKV TQVKNKLTCE VLGPIDPKMK LSLKLEDQEA KVSTQKMQVQ
LDPKAGTWQ
C LLSSGDQVLL ESKADVLATG LSHQQP

Tag: N-terminal His tag and GST tag

Buffer: Prior to lyophilization: PBS, pH 7.4, containing 0.01% Sarcosyl, 1 mM DTT, 5% Trehalose and Proclin-300.

Activity: Not tested

Concentration: Prior to lyophilization: 200 µg/ml

Note: This product is for research use only.
Not for human consumption, cosmetic, therapeutic or diagnostic use.

For Reference Only