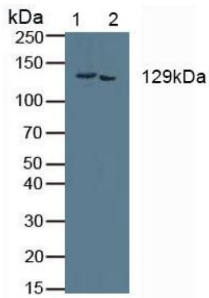
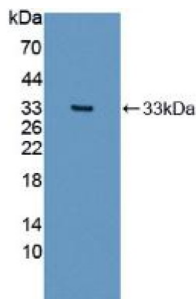


Collagen Type I Alpha 2 (COL1A2) Antibody

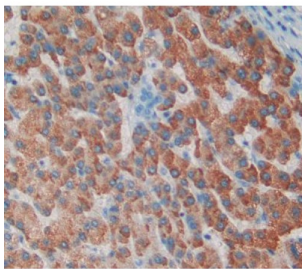
Catalogue No.: abx128403



Western blot analysis of (1) Mouse Kidney Tissue and (2) Mouse Placenta Tissue.



Western blot analysis of recombinant Human COL1A2.



IHC-P analysis of Human Tissue, with DAB staining.

COL1A2 Antibody is a Rabbit Polyclonal against COL1A2.

Target: Collagen Type I Alpha 2 (COL1A2)

Clonality: Polyclonal

Reactivity: Human

Tested Applications: WB, IHC, IF/ICC

Host: Rabbit

Recommended dilutions: WB: 1-5 µg/ml, IHC: 5-20 µg/ml, IF/ICC: 5-20 µg/ml. Optimal dilutions/concentrations should be determined by the end user.

Conjugation: Unconjugated

Datasheet

Version: 1.0.0
Revision date: 23 Nov 2024



Immunogen:	COL1a2 (Val1103-Lys1366)
Form:	Liquid
Purification:	Purified by antigen-specific affinity chromatography, followed by Protein A affinity chromatography.
Storage:	Aliquot and store at -20°C. Avoid repeated freeze/thaw cycles.
UniProt Primary AC:	P08123 (UniProt , ExPASy)
KEGG:	hsa:1278
String:	9606.ENSP00000297268
Buffer:	0.01 M PBS, pH 7.4, containing 0.05% Proclin-300, 50% glycerol.
Note:	This product is for research use only.

For Reference Only