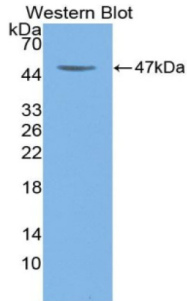
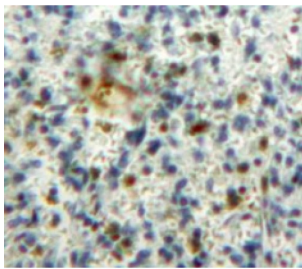


Colony Stimulating Factor 2, Granulocyte Macrophage (GMCSF) Antibody

Catalogue No.: abx130141



Western blot analysis of the recombinant protein.



IHC-P analysis of Spleen tissue, with DAB staining.

CSF2 Antibody is a Rabbit Polyclonal against CSF2.

Target:	Colony Stimulating Factor 2, Granulocyte Macrophage (GMCSF)
Clonality:	Polyclonal
Reactivity:	Rat
Tested Applications:	WB, IHC, IF/ICC
Host:	Rabbit
Recommended dilutions:	WB: 0.01-2 µg/ml, IHC: 5-20 µg/ml, IF/ICC: 5-20 µg/ml. Optimal dilutions/concentrations should be determined by the end user.
Conjugation:	Unconjugated
Immunogen:	GMCSF (Ala18-Lys144)
Form:	Liquid
Purification:	Purified by antigen-specific affinity chromatography, followed by Protein A affinity chromatography.

Datasheet

Version: 3.0.0

Revision date: 01 Apr 2025



Storage: Aliquot and store at -20°C. Avoid repeated freeze/thaw cycles.

UniProt Primary AC: P48750 ([UniProt](#), [ExPASy](#))

KEGG: rno:116630

String: [10116.ENSRNOP00000034235](#)

Buffer: 0.01 M PBS, pH 7.4, containing 0.05% Proclin-300, 50% glycerol.

Note: THIS PRODUCT IS FOR RESEARCH USE ONLY. NOT FOR USE IN DIAGNOSTIC, THERAPEUTIC OR COSMETIC PROCEDURES. NOT FOR HUMAN OR ANIMAL CONSUMPTION.

For Reference Only